

## Raf-1 (phospho Ser259) Polyclonal Antibody

Catalog_no :	AP0239
Applications :	WB,IHC-p,ELISA
Reactivity :	Human,Mouse,Rat,Monkey
Category :	抗原抗体
Size :	100µg/50µg/20µg
Gene_name :	RAF1
Protein_name :	RAF proto-oncogene serine/threonine-protein kinase
Humangene_id :	<a href="#">5895</a>
Humanswissprot_no :	<a href="#">P04049</a>
Mousegene_id :	<a href="#">110157</a>
Mouseswissprot_no :	<a href="#">Q99N57</a>
Ratgene_id :	<a href="#">24703</a>
Ratswissprot_no :	<a href="#">P11345</a>
Immunogen :	The antiserum was produced against synthesized peptide derived from human C-RAF around the phosphorylation site of Ser259. AA range:225-274
Specificity :	Phospho-Raf-1 (S259) Polyclonal Antibody detects endogenous levels of Raf-1 protein only when phosphorylated at S259.
Formulation :	Liquid in PBS containing 50% glycerol, 0.5% BSA and 0.02% sodium azide.
Source :	Rabbit
Dilution :	Western Blot: 1/500 - 1/2000. Immunohistochemistry: 1/100 - 1/300. ELISA: 1/20000. Not yet tested in other applications.
Purification :	The antibody was affinity-purified from rabbit antiserum by affinity-chromatography using epitope-specific immunogen.
Concentration :	1 mg/ml
Storage_stability :	-20°C/1 year

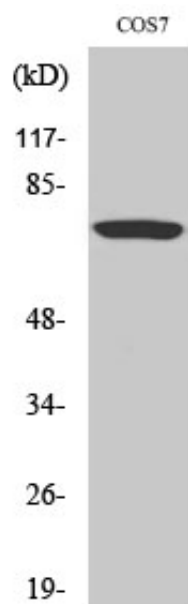


Msd : MSDS\_Antibody.pdf

Other\_name : RAF1; RAF; RAF proto-oncogene serine/threonine-protein kinase; Proto-oncogene c-RAF; cRaf; Raf-1

Molecular Weight : 73KD

## Product Images



Western Blot analysis of various cells using Phospho-Raf-1 (S259) Polyclonal Antibody diluted at 1 : 2000