

Rb (phospho Ser780) Polyclonal Antibody

Catalog_no :	AP0240
Applications :	WB,IHC-p,IF,ELISA
Reactivity :	Human,Mouse,Rat
Category :	抗原抗体
Size :	100µg/50µg/20µg
Gene_name :	RB1
Protein_name :	Retinoblastoma-associated protein
Humangene_id :	5925
Humanswissprot_no :	P06400
Mousegene_id :	19645
Mouseswissprot_no :	P13405
Ratgene_id :	24708
Ratswissprot_no :	P33568
Immunogen :	The antiserum was produced against synthesized peptide derived from human Retinoblastoma around the phosphorylation site of Ser780. AA range:751-800
Specificity :	Phospho-Rb (S780) Polyclonal Antibody detects endogenous levels of Rb protein only when phosphorylated at S780.
Formulation :	Liquid in PBS containing 50% glycerol, 0.5% BSA and 0.02% sodium azide.
Source :	Rabbit
Dilution :	Western Blot: 1/500 - 1/2000. Immunohistochemistry: 1/100 - 1/300. Immunofluorescence: 1/200 - 1/1000. ELISA: 1/10000. Not yet tested in other applications.
Purification :	The antibody was affinity-purified from rabbit antiserum by affinity-chromatography using epitope-specific immunogen.
Concentration :	1 mg/ml
Storage_stability :	-20°C/1 year



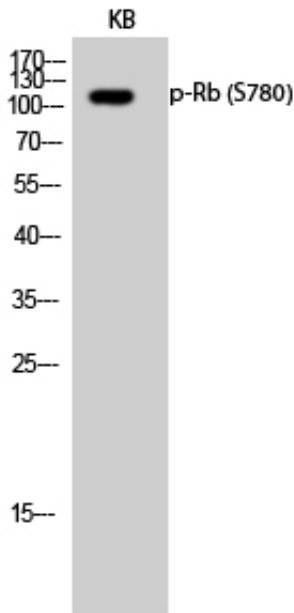
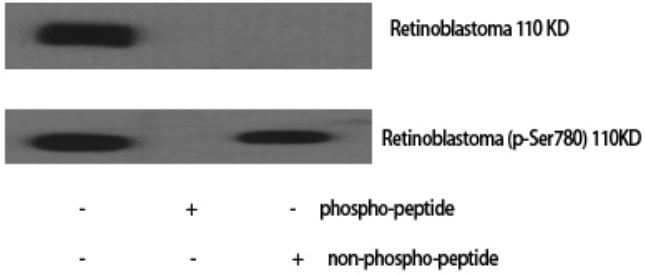
Msd : MSDS_Antibody.pdf

Other_name : RB1; Retinoblastoma-associated protein; p105-Rb; pRb; Rb; pp110

Molecular Weight : 106KD

Product Images

Western Blot analysis of various cells using Phospho-Rb (S780) Polyclonal Antibody cells nucleus extracted by Minute TM Cytoplasmic and Nuclear Fractionation kit (SC-003, Inventbiotech, MN, USA).



Western Blot analysis of KB cells using Phospho-Rb (S780) Polyclonal Antibody cells nucleus extracted by Minute TM Cytoplasmic and Nuclear Fractionation kit (SC-003, Inventbiotech, MN, USA).