

## Rb (phospho Ser807) Polyclonal Antibody

Catalog_no :	AP0242
Applications :	WB,IHC-p,ELISA
Reactivity :	Human,Mouse,Rat
Category :	抗原抗体
Size :	100µg/50µg/20µg
Gene_name :	RB1
Protein_name :	Retinoblastoma-associated protein
Humangene_id :	<a href="#">5925</a>
Humanswissprot_no :	<a href="#">P06400</a>
Mousegene_id :	<a href="#">19645</a>
Mouseswissprot_no :	<a href="#">P13405</a>
Ratgene_id :	<a href="#">24708</a>
Ratswissprot_no :	<a href="#">P33568</a>
Immunogen :	The antiserum was produced against synthesized peptide derived from human Retinoblastoma around the phosphorylation site of Ser807. AA range:781-830
Specificity :	Phospho-Rb (S807) Polyclonal Antibody detects endogenous levels of Rb protein only when phosphorylated at S807.
Formulation :	Liquid in PBS containing 50% glycerol, 0.5% BSA and 0.02% sodium azide.
Source :	Rabbit
Dilution :	Western Blot: 1/500 - 1/2000. Immunohistochemistry: 1/100 - 1/300. ELISA: 1/10000. Not yet tested in other applications.
Purification :	The antibody was affinity-purified from rabbit antiserum by affinity-chromatography using epitope-specific immunogen.
Concentration :	1 mg/ml
Storage_stability :	-20°C/1 year

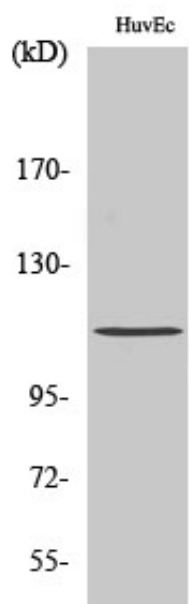


Msd : MSDS\_Antibody.pdf

Other\_name : RB1; Retinoblastoma-associated protein; p105-Rb; pRb; Rb; pp110

Molecular Weight : 106KD

## Product Images



Western Blot analysis of various cells using Phospho-Rb (S807) Polyclonal Antibody diluted at 1 : 2000 cells nucleus extracted by Minute TM Cytoplasmic and Nuclear Fractionation kit (SC-003, Invent biotech, MN, USA).