

Shb (phospho Tyr246) Polyclonal Antibody

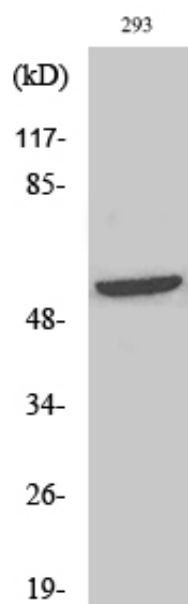
Catalog_no :	AP0245
Applications :	WB,ELISA
Reactivity :	Human,Mouse
Category :	抗原抗体
Size :	100µg/50µg/20µg
Gene_name :	SHB
Protein_name :	SH2 domain-containing adapter protein B
Humangene_id :	6461
Humanswissprot_no :	Q15464
Mousegene_id :	230126
Mouseswissprot_no :	Q6PD21
Immunogen :	Synthesized phospho-peptide around the phosphorylation site of human Shb (phospho Tyr246)
Specificity :	Phospho-Shb (Y246) Polyclonal Antibody detects endogenous levels of Shb protein only when phosphorylated at Y246.
Formulation :	Liquid in PBS containing 50% glycerol, 0.5% BSA and 0.02% sodium azide.
Source :	Rabbit
Dilution :	Western Blot: 1/500 - 1/2000. ELISA: 1/10000. Not yet tested in other applications.
Purification :	The antibody was affinity-purified from rabbit antiserum by affinity-chromatography using epitope-specific immunogen.
Concentration :	1 mg/ml
Storage_stability :	-20°C/1 year
Msds :	MSDS_Antibody.pdf
Other_name :	SHB; SH2 domain-containing adapter protein B
Molecular Weight :	55KD



专注二抗产品

Biodragon旗下品牌

Product Images



Western Blot analysis of various cells using Phospho-Shb (Y246) Polyclonal Antibody