

Sp1 (phospho Thr739) Polyclonal Antibody

Catalog_no :	AP0248
Applications :	WB,IHC-p,ELISA
Reactivity :	Human,Mouse,Rat,Monkey
Category :	抗原抗体
Size :	100µg/50µg/20µg
Gene_name :	SP1
Protein_name :	Transcription factor Sp1
Humangene_id :	6667
Humanswissprot_no :	P08047
Mousegene_id :	20683
Mouseswissprot_no :	O89090
Ratgene_id :	24790
Ratswissprot_no :	Q01714
Immunogen :	The antiserum was produced against synthesized peptide derived from human SP1 around the phosphorylation site of Thr739. AA range:706-755
Specificity :	Phospho-Sp1 (T739) Polyclonal Antibody detects endogenous levels of Sp1 protein only when phosphorylated at T739.
Formulation :	Liquid in PBS containing 50% glycerol, 0.5% BSA and 0.02% sodium azide.
Source :	Rabbit
Dilution :	Western Blot: 1/500 - 1/2000. Immunohistochemistry: 1/100 - 1/300. ELISA: 1/5000. Not yet tested in other applications.
Purification :	The antibody was affinity-purified from rabbit antiserum by affinity-chromatography using epitope-specific immunogen.
Concentration :	1 mg/ml
Storage_stability :	-20°C/1 year

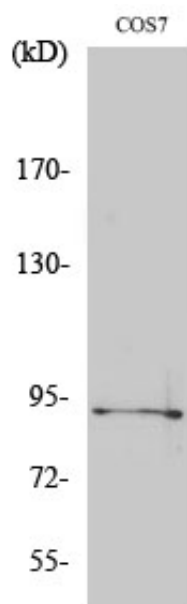


Msd : MSDS_Antibody.pdf

Other_name : SP1; TSFP1; Transcription factor Sp1

Molecular Weight : 81KD

Product Images



Western Blot analysis of various cells using Phospho-Sp1 (T739) Polyclonal Antibody diluted at 1 : 1000