

Stat3 (phospho Tyr705) Polyclonal Antibody

Catalog_no :	AP0251
Applications :	IF,WB,IHC-p,IP,ELISA
Reactivity :	Human,Mouse,Rat
Category :	抗原抗体
Size :	100µg/50µg/20µg
Gene_name :	STAT3
Protein_name :	Signal transducer and activator of transcription 3
Humangene_id :	6774
Humanswissprot_no :	P40763
Mousegene_id :	20848
Mouseswissprot_no :	P42227
Ratgene_id :	25125
Ratswissprot_no :	P52631
Immunogen :	The antiserum was produced against synthesized peptide derived from human STAT3 around the phosphorylation site of Tyr705. AA range:672-721
Specificity :	Phospho-Stat3 (Y705) Polyclonal Antibody detects endogenous levels of Stat3 protein only when phosphorylated at Y705.
Formulation :	Liquid in PBS containing 50% glycerol, 0.5% BSA and 0.02% sodium azide.
Source :	Rabbit
Dilution :	IF: 1:50-200 Western Blot: 1/500 - 1/2000. Immunohistochemistry: 1/100 - 1/300. Immunoprecipitation: 2-5 ug/mg lysate. ELISA: 1/20000. Not yet tested in other applications.
Purification :	The antibody was affinity-purified from rabbit antiserum by affinity-chromatography using epitope-specific immunogen.
Concentration :	1 mg/ml
Storage_stability :	-20°C/1 year

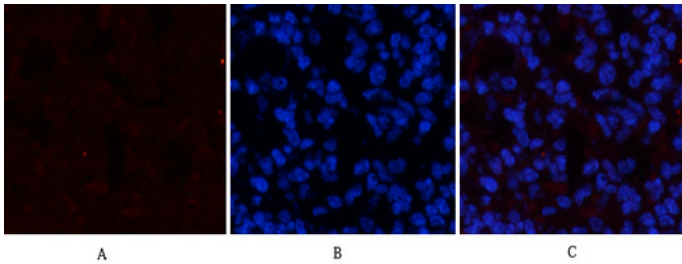


Msd : MSDS_Antibody.pdf

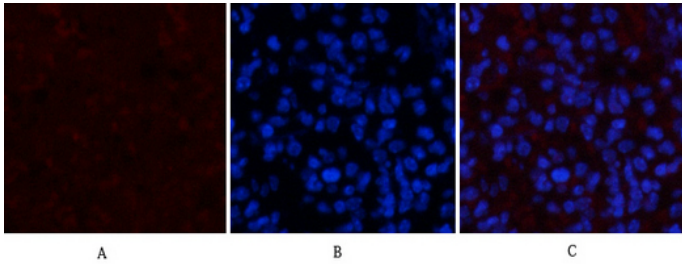
Other_name : STAT3; APRF; Signal transducer and activator of transcription 3; Acute-phase response factor

Molecular Weight : 88KD

Product Images

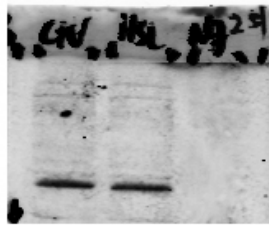


Immunofluorescence analysis of mouse-spleen tissue. 1,Stat3 (phospho Tyr705) Polyclonal Antibody(red) was diluted at 1:200(4°C,overnight). 2, Cy3 labeled Secondary antibody was diluted at 1:300(room temperature, 50min).3, Picture B: DAPI(blue) 10min. Picture A:Target. Picture B: DAPI. Picture C: merge of A+B



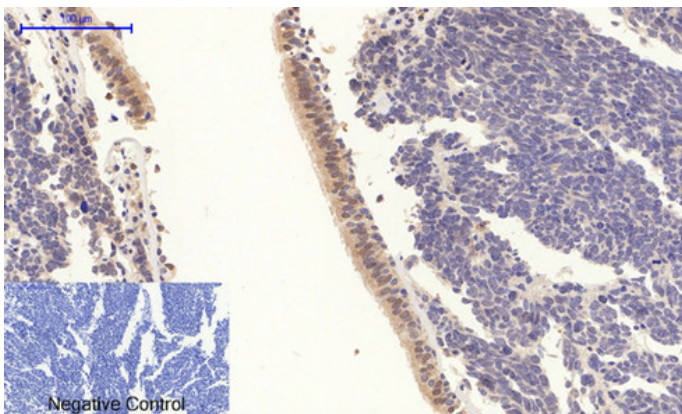
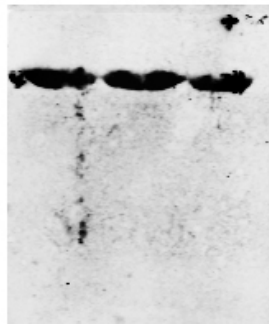
Immunofluorescence analysis of mouse-spleen tissue. 1,Stat3 (phospho Tyr705) Polyclonal Antibody(red) was diluted at 1:200(4°C,overnight). 2, Cy3 labeled Secondary antibody was diluted at 1:300(room temperature, 50min).3, Picture B: DAPI(blue) 10min. Picture A:Target. Picture B: DAPI. Picture C: merge of A+B

Stat3 (pTyr705)-
88kd



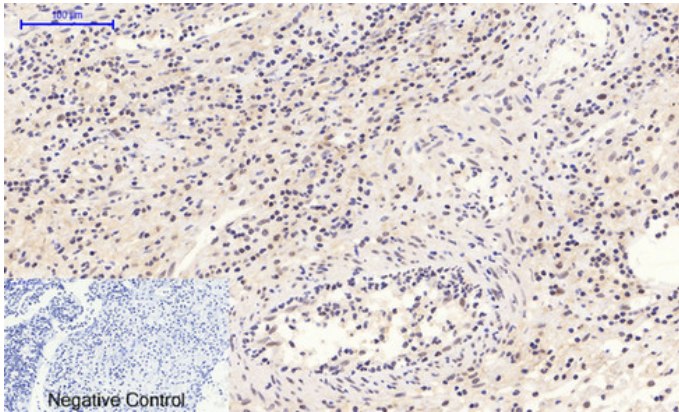
Western Blot analysis of our customer's samples using primary antibody diluted at 1:500, The picture was kindly provided by our customer.. Cell lysate was extracted by Minute™ Plasma Membrane Protein Isolation and Cell Fractionation Kit(SM-005, Inventbiotech,MN,USA).

actin 42kd-

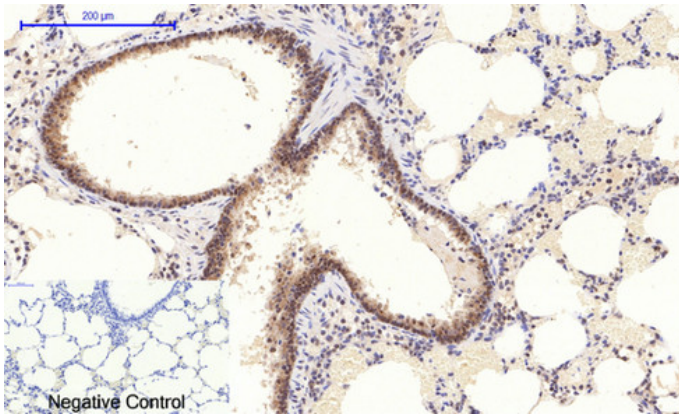


Immunohistochemical analysis of paraffin-embedded Human-lung-cancer tissue. 1,Stat3 (phospho Tyr705) Polyclonal Antibody was diluted at 1:200(4°C,overnight). 2, Sodium citrate pH 6.0 was used for antibody retrieval(>98°C,20min). 3,Secondary antibody was diluted at 1:200(room temperature, 30min). Negative control was used by secondary antibody only.

Immunohistochemical analysis of paraffin-embedded Human-Appendix tissue. 1,Stat3 (phospho Tyr705) Polyclonal Antibody was diluted at 1:200(4°C,overnight). 2, Sodium citrate pH 6.0 was used for antibody retrieval(>98°C,20min). 3,Secondary antibody was

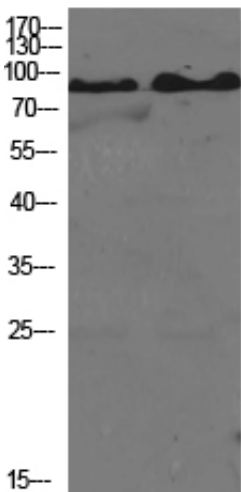


diluted at 1:200(room temperature, 30min). Negative control was used by secondary antibody only.



Immunohistochemical analysis of paraffin-embedded Rat-lung tissue. 1, Stat3 (phospho Tyr705) Polyclonal Antibody was diluted at 1:200(4°C, overnight). 2, Sodium citrate pH 6.0 was used for antibody retrieval(>98°C, 20min). 3, Secondary antibody was diluted at 1:200(room temperature, 30min). Negative control was used by secondary antibody only.

KB MCF-7



p-Stat3 (Y705)

Western Blot analysis of various cells using Phospho-Stat3 (Y705) Polyclonal Antibody diluted at 1 : 2000

Western Blot analysis of KB cells using Phospho-Stat3 (Y705) Polyclonal Antibody diluted at 1 : 2000

