

## Stat6 (phospho Tyr641) Polyclonal Antibody

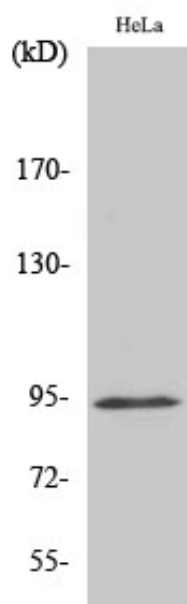
Catalog_no :	AP0256
Applications :	WB,IHC-p,ELISA
Reactivity :	Human,Mouse,Rat
Category :	抗原抗体
Size :	100µg/50µg/20µg
Gene_name :	STAT6
Protein_name :	Signal transducer and activator of transcription 6
Humangene_id :	<a href="#">6778</a>
Humanswissprot_no :	<a href="#">P42226</a>
Mousegene_id :	<a href="#">20852</a>
Mouseswissprot_no :	<a href="#">P52633</a>
Immunogen :	The antiserum was produced against synthesized peptide derived from human STAT6 around the phosphorylation site of Tyr641. AA range:608-657
Specificity :	Phospho-Stat6 (Y641) Polyclonal Antibody detects endogenous levels of Stat6 protein only when phosphorylated at Y641.
Formulation :	Liquid in PBS containing 50% glycerol, 0.5% BSA and 0.02% sodium azide.
Source :	Rabbit
Dilution :	Western Blot: 1/500 - 1/2000. Immunohistochemistry: 1/100 - 1/300. ELISA: 1/10000. Not yet tested in other applications.
Purification :	The antibody was affinity-purified from rabbit antiserum by affinity-chromatography using epitope-specific immunogen.
Concentration :	1 mg/ml
Storage_stability :	-20°C/1 year
Msds :	<a href="#">MSDS_Antibody.pdf</a>
Other_name :	STAT6; Signal transducer and activator of transcription 6; IL-4 Stat
Molecular	94KD



Weight :

---

## Product Images



Western Blot analysis of various cells using Phospho-Stat6 (Y641) Polyclonal Antibody