

Synapsin I (phospho Ser9) Polyclonal Antibody

Catalog_no :	AP0257
Applications :	WB,IHC-p,IF,ELISA
Reactivity :	Human,Mouse,Rat
Category :	抗原抗体
Size :	100µg/50µg/20µg
Gene_name :	SYN1
Protein_name :	Synapsin-1
Humangene_id :	6853
Humanswissprot_no :	P17600
Mousegene_id :	20964
Mouseswissprot_no :	O88935
Ratgene_id :	24949
Ratswissprot_no :	P09951
Immunogen :	The antiserum was produced against synthesized peptide derived from human Synapsin around the phosphorylation site of Ser9. AA range:3-52
Specificity :	Phospho-Synapsin I (S9) Polyclonal Antibody detects endogenous levels of Synapsin I protein only when phosphorylated at S9.
Formulation :	Liquid in PBS containing 50% glycerol, 0.5% BSA and 0.02% sodium azide.
Source :	Rabbit
Dilution :	Western Blot: 1/500 - 1/2000. Immunohistochemistry: 1/100 - 1/300. Immunofluorescence: 1/200 - 1/1000. ELISA: 1/20000. Not yet tested in other applications.
Purification :	The antibody was affinity-purified from rabbit antiserum by affinity-chromatography using epitope-specific immunogen.
Concentration :	1 mg/ml
Storage_stability :	-20°C/1 year

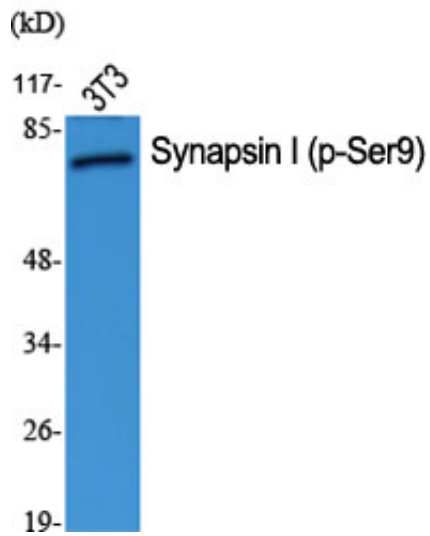


Msd : MSDS_Antibody.pdf

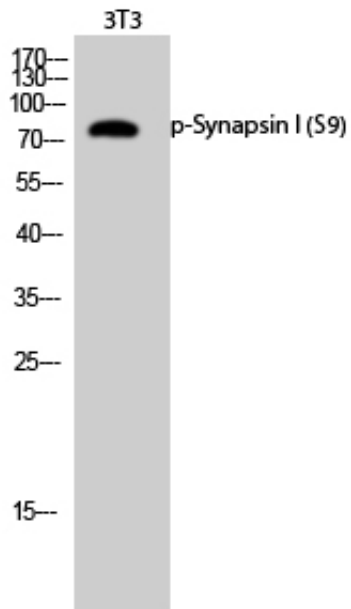
Other_name : SYN1; Synapsin-1; Brain protein 4.1; Synapsin I

Molecular Weight : 77KD

Product Images



Western Blot analysis of various cells using Phospho-Synapsin I (S9) Polyclonal Antibody diluted at 1 : 1000



Western Blot analysis of 3T3 cells using Phospho-Synapsin I (S9) Polyclonal Antibody diluted at 1 : 1000

Western blot analysis of HELA KB 293T 3T3 lysis using Phospho-Synapsin I (S9) antibody. Antibody was diluted at 1:1000

