

Tau (phospho Ser356) Polyclonal Antibody

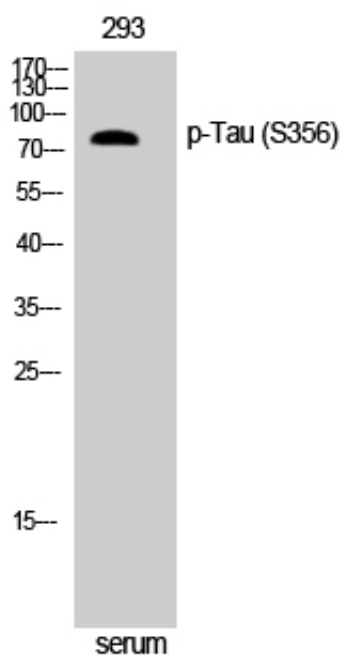
Catalog_no :	AP0262
Applications :	WB,IHC-p,ELISA
Reactivity :	Human,Mouse,Rat
Category :	抗原抗体
Size :	100µg/50µg/20µg
Gene_name :	MAPT
Protein_name :	Microtubule-associated protein tau
Humangene_id :	4137
Humanswissprot_no :	P10636
Mousegene_id :	17762
Mouseswissprot_no :	P10637
Ratswissprot_no :	P19332
Immunogen :	The antiserum was produced against synthesized peptide derived from human Tau around the phosphorylation site of Ser356. AA range:641-690
Specificity :	Phospho-Tau (S356) Polyclonal Antibody detects endogenous levels of Tau protein only when phosphorylated at S356.
Formulation :	Liquid in PBS containing 50% glycerol, 0.5% BSA and 0.02% sodium azide.
Source :	Rabbit
Dilution :	Western Blot: 1/500 - 1/2000. Immunohistochemistry: 1/100 - 1/300. ELISA: 1/40000. Not yet tested in other applications.
Purification :	The antibody was affinity-purified from rabbit antiserum by affinity-chromatography using epitope-specific immunogen.
Concentration :	1 mg/ml
Storage_stability :	-20°C/1 year
Msds :	MSDS_Antibody.pdf



Other_name : MAPT; MAPTL; MTBT1; TAU; Microtubule-associated protein tau; Neurofibrillary tangle protein; Paired helical filament-tau; PHF-tau

Molecular Weight : 79KD

Product Images



Western Blot analysis of NIH-3T3 cells using Phospho-Tau (S356) Polyclonal Antibody diluted at 1 : 500