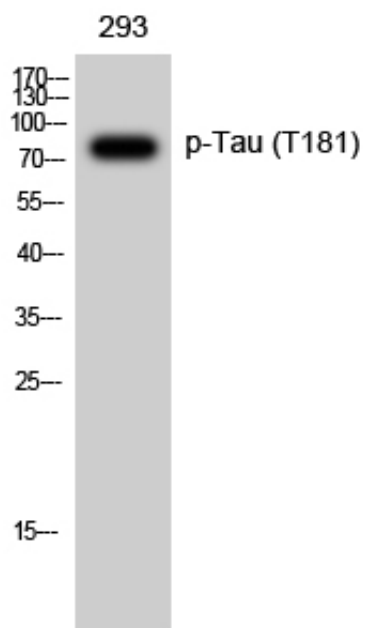


Tau (phospho Thr181) Polyclonal Antibody

Catalog_no :	AP0265
Applications :	WB,ELISA
Reactivity :	Human
Category :	抗原抗体
Size :	100µg/50µg/20µg
Gene_name :	MAPT
Protein_name :	Microtubule-associated protein tau
Humangene_id :	4137
Humanswissprot_no :	P10636
Immunogen :	The antiserum was produced against synthesized peptide derived from human Tau around the phosphorylation site of Thr181. AA range:471-520
Specificity :	Phospho-Tau (T181) Polyclonal Antibody detects endogenous levels of Tau protein only when phosphorylated at T181.
Formulation :	Liquid in PBS containing 50% glycerol, 0.5% BSA and 0.02% sodium azide.
Source :	Rabbit
Dilution :	Western Blot: 1/500 - 1/2000. ELISA: 1/20000. Not yet tested in other applications.
Purification :	The antibody was affinity-purified from rabbit antiserum by affinity-chromatography using epitope-specific immunogen.
Concentration :	1 mg/ml
Storage_stability :	-20°C/1 year
Msds :	MSDS_Antibody.pdf
Other_name :	MAPT; MAPTL; MTBT1; TAU; Microtubule-associated protein tau; Neurofibrillary tangle protein; Paired helical filament-tau; PHF-tau

Product Images



Western Blot analysis of 293 cells using Phospho-Tau (T181) Polyclonal Antibody diluted at 1 : 2000