

## Tau (phospho Thr205) Polyclonal Antibody

Catalog_no :	AP0266
Applications :	WB,ELISA
Reactivity :	Human,Mouse,Rat
Category :	抗原抗体
Size :	100µg/50µg/20µg
Gene_name :	MAPT
Protein_name :	Microtubule-associated protein tau
Humangene_id	<a href="#">4137</a>
:	
Humanswissprot	<a href="#">P10636</a>
_no :	
Mousegene_id :	<a href="#">17762</a>
Mouseswissprot	<a href="#">P10637</a>
_no :	
Ratswissprot_no	<a href="#">P19332</a>
:	
Immunogen :	The antiserum was produced against synthesized peptide derived from human Tau around the phosphorylation site of Thr205. AA range:491-540
Specificity :	Phospho-Tau (T205) Polyclonal Antibody detects endogenous levels of Tau protein only when phosphorylated at T205.
Formulation :	Liquid in PBS containing 50% glycerol, 0.5% BSA and 0.02% sodium azide.
Source :	Rabbit
Dilution :	Western Blot: 1/500 - 1/2000. ELISA: 1/20000. Not yet tested in other applications.
Purification :	The antibody was affinity-purified from rabbit antiserum by affinity-chromatography using epitope-specific immunogen.
Concentration :	1 mg/ml
Storage_stability	-20°C/1 year
:	
Msds :	<a href="#">MSDS_Antibody.pdf</a>
Other_name :	MAPT; MAPTL; MTBT1; TAU; Microtubule-associated protein tau; Neurofibrillary tangle



protein; Paired helical filament-tau; PHF-tau

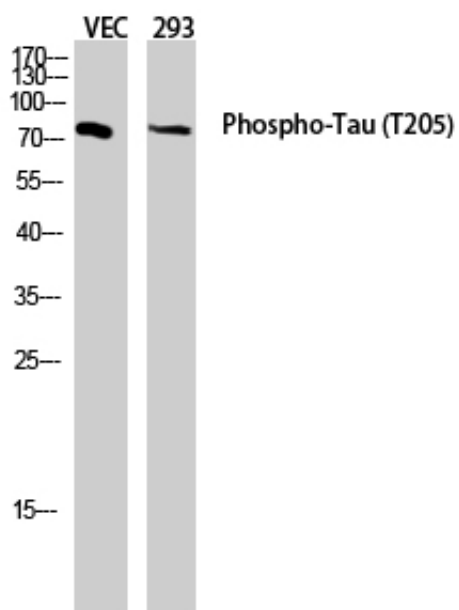
---

Molecular  
Weight :

79KD

---

## Product Images



Western blot analysis of VEC 293 lysis using Phospho-Tau (T205) antibody. Antibody was diluted at 1:2000