



CaMKII α / β / δ (phospho Thr305) Polyclonal Antibody

Catalog_no :	AP0279
Applications :	WB,IHC-p,ELISA
Reactivity :	Human,Mouse,Rat
Category :	抗原抗体
Size :	100 μ g/50 μ g/20 μ g
Gene_name :	CAMK2A
Protein_name :	Calcium/calmodulin-dependent protein kinase type II subunit alpha
Humangene_id :	816/817
Humanswissprot_no :	Q9UQM7/Q13554/Q13557
Mousegene_id :	12322/12323/108058
Ratgene_id :	25400/24245/24246
Ratswissprot_no :	P11275/P08413/P15791
Immunogen :	The antiserum was produced against synthesized peptide derived from human CaMK2 alpha/beta/delta around the phosphorylation site of Thr305. AA range:271-320
Specificity :	Phospho-CaMKII α / β / δ (T305) Polyclonal Antibody detects endogenous levels of CaMKII α / β / δ protein only when phosphorylated at T305.
Formulation :	Liquid in PBS containing 50% glycerol, 0.5% BSA and 0.02% sodium azide.
Source :	Rabbit
Dilution :	Western Blot: 1/500 - 1/2000. Immunohistochemistry: 1/100 - 1/300. ELISA: 1/5000. Not yet tested in other applications.
Purification :	The antibody was affinity-purified from rabbit antiserum by affinity-chromatography using epitope-specific immunogen.
Concentration :	1 mg/ml
Storage_stability :	-20°C/1 year
Msds :	MSDS_Antibody.pdf
Other_name :	CAMK2A; CAMKA; KIAA0968; Calcium/calmodulin-dependent protein kinase type II

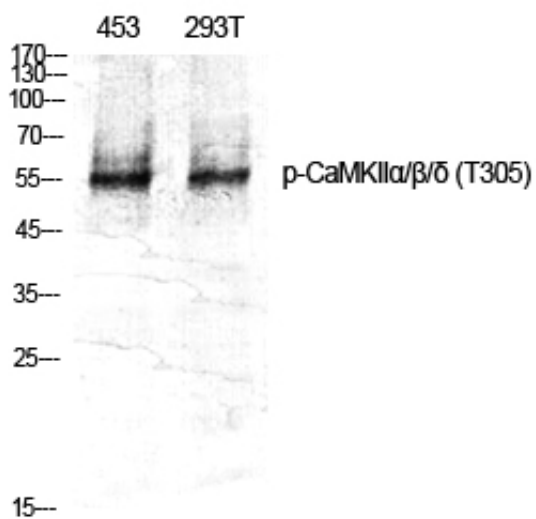


subunit alpha; CaM kinase II subunit alpha; CaMK-II subunit alpha; CAMK2B; CAM2;
CAMK2; CAMKB; Calcium/calmodulin-dependent protein kinase type II subunit beta; Ca

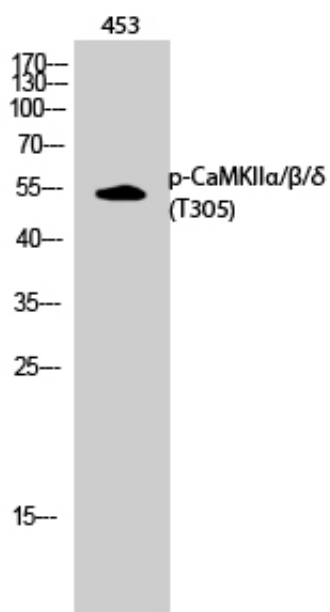
Molecular
Weight :

54KD

Product Images



Western Blot analysis of various cells using Phospho-CaMKIIα/β/δ (T305) Polyclonal Antibody diluted at 1 : 1000



Western Blot analysis of 453 cells using Phospho-CaMKIIα/β/δ (T305) Polyclonal Antibody diluted at 1 : 1000