

eIF4B (phospho Ser422) Polyclonal Antibody

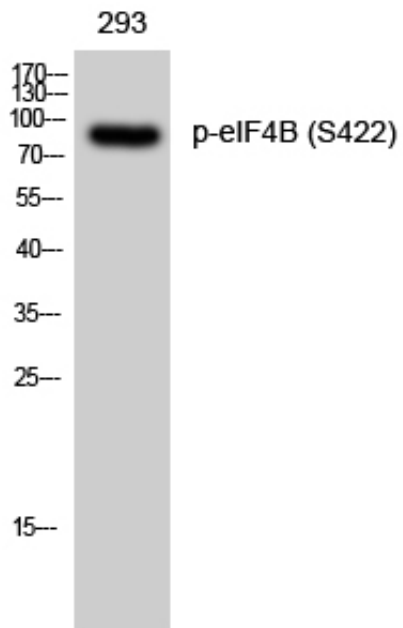
Catalog_no :	AP0280
Applications :	WB,IHC-p,IF,ELISA
Reactivity :	Human,Mouse
Category :	抗原抗体
Size :	100µg/50µg/20µg
Gene_name :	EIF4B
Protein_name :	Eukaryotic translation initiation factor 4B
Humangene_id :	3716
Humanswissprot_no :	P23588
Mousegene_id :	75705
Mouseswissprot_no :	Q8BGD9
Immunogen :	The antiserum was produced against synthesized peptide derived from human eIF4B around the phosphorylation site of Ser422. AA range:388-437
Specificity :	Phospho-eIF4B (S422) Polyclonal Antibody detects endogenous levels of eIF4B protein only when phosphorylated at S422.
Formulation :	Liquid in PBS containing 50% glycerol, 0.5% BSA and 0.02% sodium azide.
Source :	Rabbit
Dilution :	Western Blot: 1/500 - 1/2000. Immunohistochemistry: 1/100 - 1/300. Immunofluorescence: 1/200 - 1/1000. ELISA: 1/40000. Not yet tested in other applications.
Purification :	The antibody was affinity-purified from rabbit antiserum by affinity-chromatography using epitope-specific immunogen.
Concentration :	1 mg/ml
Storage_stability :	-20°C/1 year
Msds :	MSDS_Antibody.pdf
Other_name :	EIF4B; Eukaryotic translation initiation factor 4B; eIF-4B



Molecular
Weight :

80KD

Product Images



Western Blot analysis of 293 cells using Phospho-eIF4B (S422) Polyclonal Antibody diluted at 1 : 2000