

Ephrin-B1/2 (phospho Tyr330) Polyclonal Antibody

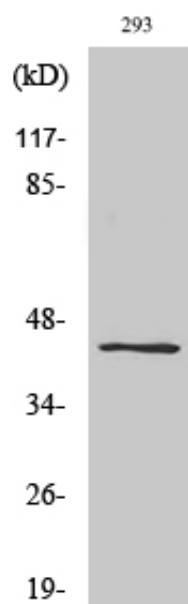
Catalog_no :	AP0284
Applications :	WB,ELISA
Reactivity :	Human,Mouse,Rat
Category :	抗原抗体
Size :	100µg/50µg/20µg
Gene_name :	EFNB1/EFNB2
Protein_name :	Ephrin-B1/Ephrin-B2
Humangene_id :	1947/1948
Humanswissprot_no :	P98172/P52799
Mousegene_id :	13641/13642
Ratswissprot_no :	P52796
Immunogen :	The antiserum was produced against synthesized peptide derived from human EFNB1/2 around the phosphorylation site of Tyr330. AA range:284-333
Specificity :	Phospho-Ephrin-B1/2 (Y330) Polyclonal Antibody detects endogenous levels of Ephrin-B1/2 protein only when phosphorylated at Y330.
Formulation :	Liquid in PBS containing 50% glycerol, 0.5% BSA and 0.02% sodium azide.
Source :	Rabbit
Dilution :	Western Blot: 1/500 - 1/2000. ELISA: 1/40000. Not yet tested in other applications.
Purification :	The antibody was affinity-purified from rabbit antiserum by affinity-chromatography using epitope-specific immunogen.
Concentration :	1 mg/ml
Storage_stability :	-20°C/1 year
Msds :	MSDS_Antibody.pdf
Other_name :	EFNB1; EFL3; EPLG2; LERK2; Ephrin-B1; EFL-3; ELK ligand; ELK-L; EPH-related receptor tyrosine kinase ligand 2; LERK-2; EFNB2; EPLG5; HTKL; LERK5; Ephrin-B2; EPH-related receptor tyrosine kinase ligand 5; LERK-5; HTK ligand; HTK-L



Molecular
Weight :

59KD

Product Images



Western Blot analysis of various cells using Phospho-Ephrin-B1/2 (Y330) Polyclonal Antibody