

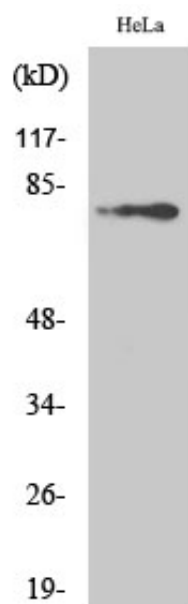
Btk (phospho Tyr223) Polyclonal Antibody

Catalog_no :	AP0287
Applications :	WB,ELISA
Reactivity :	Human,Mouse,Rat
Category :	抗原抗体
Size :	100µg/50µg/20µg
Gene_name :	BTK
Protein_name :	Tyrosine-protein kinase BTK
Humangene_id :	695
Humanswissprot_no :	Q06187
Mousegene_id :	12229
Mouseswissprot_no :	P35991
Immunogen :	The antiserum was produced against synthesized peptide derived from human BTK around the phosphorylation site of Tyr223. AA range:188-237
Specificity :	Phospho-Btk (Y223) Polyclonal Antibody detects endogenous levels of Btk protein only when phosphorylated at Y223.
Formulation :	Liquid in PBS containing 50% glycerol, 0.5% BSA and 0.02% sodium azide.
Source :	Rabbit
Dilution :	Western Blot: 1/500 - 1/2000. ELISA: 1/40000. Not yet tested in other applications.
Purification :	The antibody was affinity-purified from rabbit antiserum by affinity-chromatography using epitope-specific immunogen.
Concentration :	1 mg/ml
Storage_stability :	-20°C/1 year
Msds :	MSDS_Antibody.pdf
Other_name :	BTK; AGMX1; ATK; BPK; Tyrosine-protein kinase BTK; Agammaglobulinaemia tyrosine kinase; ATK; B-cell progenitor kinase; BPK; Bruton tyrosine kinase
Molecular	80KD



Weight :

Product Images



Western Blot analysis of various cells using Phospho-Btk (Y223) Polyclonal Antibody