

CKR-5 (phospho Ser336) Polyclonal Antibody

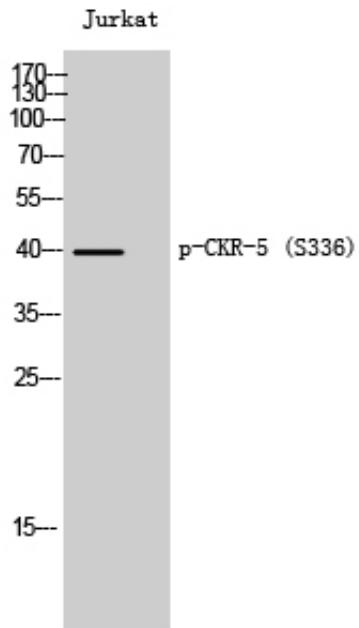
Catalog_no :	AP0289
Applications :	WB,ELISA
Reactivity :	Human,Mouse,Rat
Category :	抗原抗体
Size :	100µg/50µg/20µg
Gene_name :	CCR5
Protein_name :	C-C chemokine receptor type 5
Humangene_id :	1234/727797
Humanswissprot_no :	P51681
Mousegene_id :	12774
Mouseswissprot_no :	P51682
Ratgene_id :	117029
Ratswissprot_no :	O08556
Immunogen :	The antiserum was produced against synthesized peptide derived from human CCR5 around the phosphorylation site of Ser336. AA range:302-351
Specificity :	Phospho-CKR-5 (S336) Polyclonal Antibody detects endogenous levels of CKR-5 protein only when phosphorylated at S336.
Formulation :	Liquid in PBS containing 50% glycerol, 0.5% BSA and 0.02% sodium azide.
Source :	Rabbit
Dilution :	Western Blot: 1/500 - 1/2000. ELISA: 1/10000. Not yet tested in other applications.
Purification :	The antibody was affinity-purified from rabbit antiserum by affinity-chromatography using epitope-specific immunogen.
Concentration :	1 mg/ml
Storage_stability :	-20°C/1 year
Msds :	MSDS_Antibody.pdf



Other_name : CCR5; CMKBR5; C-C chemokine receptor type 5; C-C CKR-5; CC-CKR-5; CCR-5; CCR5;
CHEMR13; HIV-1 fusion coreceptor; CD antigen CD195

Molecular Weight : 40KD

Product Images



Western Blot analysis of Jurkat cells using Phospho-CKR-5 (S336) Polyclonal Antibody