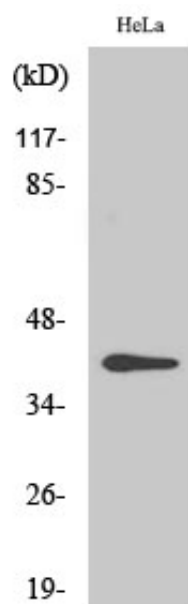


## CKR-5 (phospho Ser349) Polyclonal Antibody

Catalog_no :	AP0290
Applications :	WB,ELISA
Reactivity :	Human
Category :	抗原抗体
Size :	100µg/50µg/20µg
Gene_name :	CCR5
Protein_name :	C-C chemokine receptor type 5
Humangene_id :	<a href="#">1234/727797</a>
Humanswissprot_no :	<a href="#">P51681</a>
Immunogen :	The antiserum was produced against synthesized peptide derived from human CCR5 around the phosphorylation site of Ser349. AA range:303-352
Specificity :	Phospho-CKR-5 (S349) Polyclonal Antibody detects endogenous levels of CKR-5 protein only when phosphorylated at S349.
Formulation :	Liquid in PBS containing 50% glycerol, 0.5% BSA and 0.02% sodium azide.
Source :	Rabbit
Dilution :	Western Blot: 1/500 - 1/2000. ELISA: 1/5000. Not yet tested in other applications.
Purification :	The antibody was affinity-purified from rabbit antiserum by affinity-chromatography using epitope-specific immunogen.
Concentration :	1 mg/ml
Storage_stability :	-20°C/1 year
Msds :	MSDS_Antibody.pdf
Other_name :	CCR5; CMKBR5; C-C chemokine receptor type 5; C-C CKR-5; CC-CKR-5; CCR-5; CCR5; CHEMR13; HIV-1 fusion coreceptor; CD antigen CD195
Molecular Weight :	40KD

## Product Images



Western Blot analysis of various cells using Phospho-CKR-5 (S349) Polyclonal Antibody diluted at 1 : 2000