



Rad17 (phospho Ser645) Polyclonal Antibody

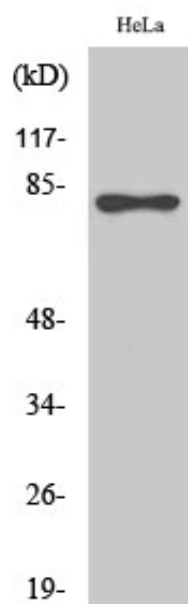
Catalog_no :	AP0291
Applications :	WB,ELISA
Reactivity :	Human,Mouse
Category :	抗原抗体
Size :	100µg/50µg/20µg
Gene_name :	RAD17
Protein_name :	Cell cycle checkpoint protein RAD17
Humangene_id :	5884
Humanswissprot_no :	O75943
Mousegene_id :	19356
Mouseswissprot_no :	Q6NXW6
Immunogen :	The antiserum was produced against synthesized peptide derived from human RAD17 around the phosphorylation site of Ser645. AA range:621-670
Specificity :	Phospho-Rad17 (S645) Polyclonal Antibody detects endogenous levels of Rad17 protein only when phosphorylated at S645.
Formulation :	Liquid in PBS containing 50% glycerol, 0.5% BSA and 0.02% sodium azide.
Source :	Rabbit
Dilution :	Western Blot: 1/500 - 1/2000. ELISA: 1/5000. Not yet tested in other applications.
Purification :	The antibody was affinity-purified from rabbit antiserum by affinity-chromatography using epitope-specific immunogen.
Concentration :	1 mg/ml
Storage_stability :	-20°C/1 year
Msds :	MSDS_Antibody.pdf
Other_name :	RAD17; R24L; Cell cycle checkpoint protein RAD17; hRad17; RF-C/activator 1 homolog
Molecular Weight :	77KD



专注二抗产品

Biodragon旗下品牌

Product Images



Western Blot analysis of various cells using Phospho-Rad17 (S645) Polyclonal Antibody