

## RUNX1 (phospho Ser249) Polyclonal Antibody

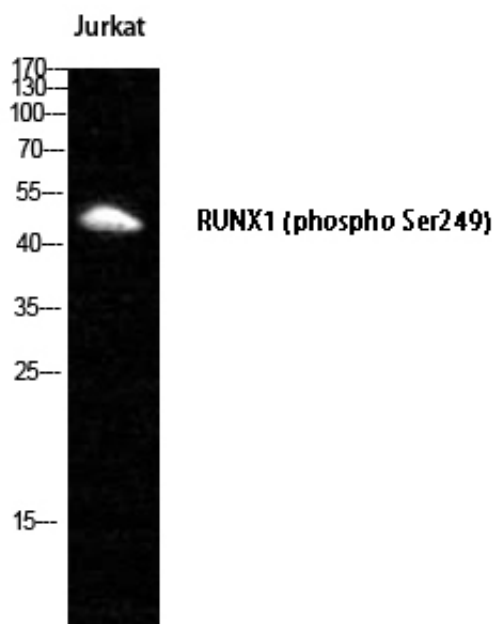
Catalog_no :	AP0293
Applications :	WB,ELISA
Reactivity :	Human,Mouse,Rat
Category :	抗原抗体
Size :	100µg/50µg/20µg
Gene_name :	RUNX1
Protein_name :	Runt-related transcription factor 1
Humangene_id :	<a href="#">861</a>
Humanswissprot_no :	<a href="#">Q01196</a>
Mousegene_id :	<a href="#">12394</a>
Mouseswissprot_no :	<a href="#">Q03347</a>
Ratgene_id :	<a href="#">50662</a>
Ratswissprot_no :	<a href="#">Q63046</a>
Immunogen :	The antiserum was produced against synthesized peptide derived from human AML1 around the phosphorylation site of Ser276. AA range:242-291
Specificity :	Phospho-RUNX1 (S249) Polyclonal Antibody detects endogenous levels of RUNX1 protein only when phosphorylated at S249.
Formulation :	Liquid in PBS containing 50% glycerol, 0.5% BSA and 0.02% sodium azide.
Source :	Rabbit
Dilution :	Western Blot: 1/500 - 1/2000. ELISA: 1/5000. Not yet tested in other applications.
Purification :	The antibody was affinity-purified from rabbit antiserum by affinity-chromatography using epitope-specific immunogen.
Concentration :	1 mg/ml
Storage_stability :	-20°C/1 year
Msds :	MSDS_Antibody.pdf



Other\_name : RUNX1; AML1; CBFA2; Runt-related transcription factor 1; Acute myeloid leukemia 1 protein; Core-binding factor subunit alpha-2; CBF-alpha-2; Oncogene AML-1; Polyomavirus enhancer-binding protein 2 alpha B subunit; PEA2-alpha B; PEBP2-alpha

Molecular Weight : 49KD

## Product Images



Western Blot analysis of Jurkat cells using Phospho-RUNX1 (S249) Polyclonal Antibody cells nucleus extracted by Minute TM Cytoplasmic and Nuclear Fractionation kit (SC-003, Invent biotech, MN, USA).