

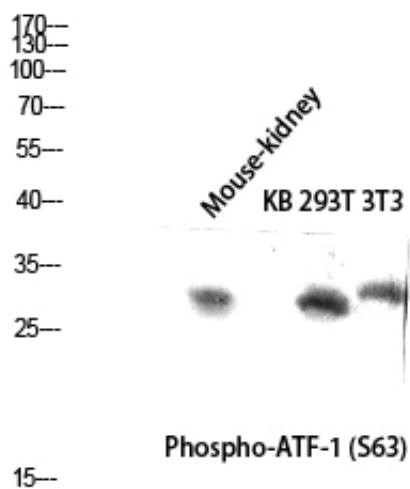
ATF-1 (phospho Ser63) Polyclonal Antibody

Catalog_no :	AP0294
Applications :	WB,ELISA
Reactivity :	Human,Mouse
Category :	抗原抗体
Size :	100µg/50µg/20µg
Gene_name :	ATF1
Protein_name :	Cyclic AMP-dependent transcription factor ATF-1
Humangene_id	466
:	
Humanswissprot	P18846
_no :	
Mousegene_id :	11908
Mouseswissprot	P81269
_no :	
Immunogen :	The antiserum was produced against synthesized peptide derived from human ATF1 around the phosphorylation site of Ser63. AA range:31-80
Specificity :	Phospho-ATF-1 (S63) Polyclonal Antibody detects endogenous levels of ATF-1 protein only when phosphorylated at S63.
Formulation :	Liquid in PBS containing 50% glycerol, 0.5% BSA and 0.02% sodium azide.
Source :	Rabbit
Dilution :	Western Blot: 1/500 - 1/2000. ELISA: 1/5000. Not yet tested in other applications.
Purification :	The antibody was affinity-purified from rabbit antiserum by affinity-chromatography using epitope-specific immunogen.
Concentration :	1 mg/ml
Storage_stability	-20°C/1 year
:	
Msds :	MSDS_Antibody.pdf
Other_name :	ATF1; Cyclic AMP-dependent transcription factor ATF-1; cAMP-dependent transcription factor ATF-1; Activating transcription factor 1; Protein TREB36
Molecular	29KD



Weight :

Product Images



Western blot analysis of Mouse-kidney KB 293T 3T3 lysis using Phospho-ATF-1 (S63) antibody. Antibody was diluted at 1:500 cells nucleus extracted by Minute TM Cytoplasmic and Nuclear Fractionation kit (SC-003, Invent biotech, MN, USA).