

Cyclin D1 (phospho Thr286) Polyclonal Antibody

Catalog_no :	AP0297
Applications :	WB,IHC-p,ELISA
Reactivity :	Human,Mouse,Rat
Category :	抗原抗体
Size :	100µg/50µg/20µg
Gene_name :	CCND1
Protein_name :	G1/S-specific cyclin-D1
Humangene_id	595
:	
Humanswissprot	P24385
_no :	
Mousegene_id :	12443
Mouseswissprot	P25322
_no :	
Ratgene_id :	58919
Ratswissprot_no	P39948
:	
Immunogen :	The antiserum was produced against synthesized peptide derived from human Cyclin D1 around the phosphorylation site of Thr286. AA range:246-295
Specificity :	Phospho-Cyclin D1 (T286) Polyclonal Antibody detects endogenous levels of Cyclin D1 protein only when phosphorylated at T286.
Formulation :	Liquid in PBS containing 50% glycerol, 0.5% BSA and 0.02% sodium azide.
Source :	Rabbit
Dilution :	Western Blot: 1/500 - 1/2000. Immunohistochemistry: 1/100 - 1/300. ELISA: 1/10000. Not yet tested in other applications.
Purification :	The antibody was affinity-purified from rabbit antiserum by affinity-chromatography using epitope-specific immunogen.
Concentration :	1 mg/ml
Storage_stability	-20°C/1 year
:	

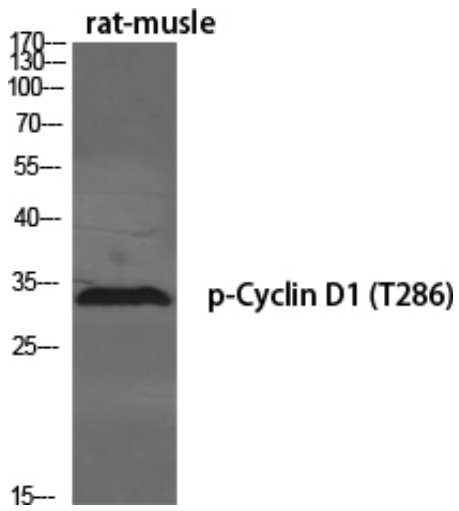


Msd : MSDS_Antibody.pdf

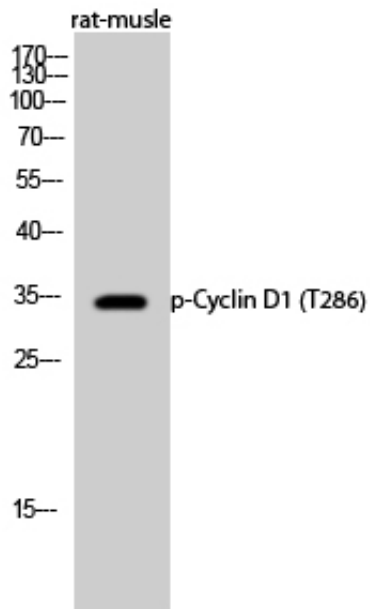
Other_name : CCND1; BCL1; PRAD1; G1/S-specific cyclin-D1; B-cell lymphoma 1 protein; BCL-1; BCL-1 oncogene; PRAD1 oncogene

Molecular Weight : 33KD

Product Images



Western Blot analysis of various cells using Phospho-Cyclin D1 (T286) Polyclonal Antibody diluted at 1 : 500



Western Blot analysis of rat-muscle cells using Phospho-Cyclin D1 (T286) Polyclonal Antibody diluted at 1 : 500