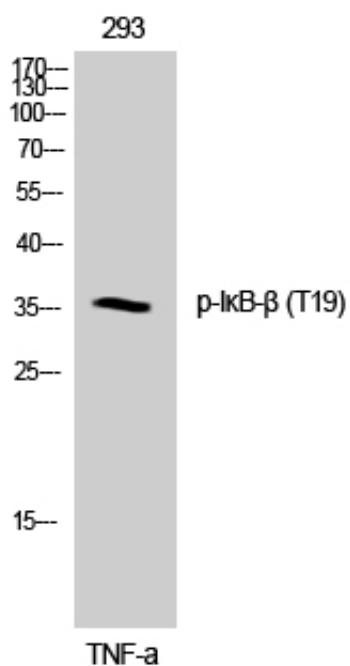


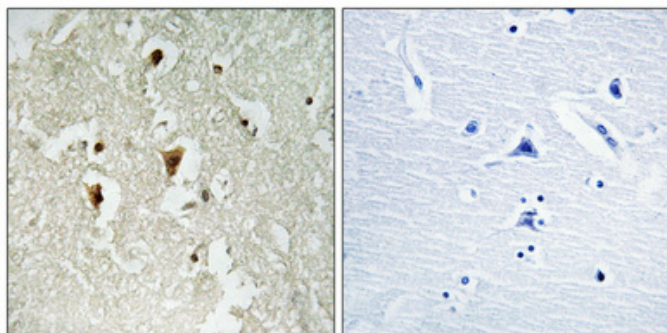
IkB- β (phospho Thr19) Polyclonal Antibody

Catalog_no :	AP0300
Applications :	WB,IHC-p,ELISA
Reactivity :	Human
Category :	抗原抗体
Size :	100 μ g/50 μ g/20 μ g
Gene_name :	NFKB1B
Protein_name :	NF-kappa-B inhibitor beta
Humangene_id :	4793
Humanswissprot_no :	Q15653
Immunogen :	The antiserum was produced against synthesized peptide derived from human IkappaB-beta around the phosphorylation site of Thr19. AA range:4-53
Specificity :	Phospho-IkappaB- β (T19) Polyclonal Antibody detects endogenous levels of IkappaB- β protein only when phosphorylated at T19.
Formulation :	Liquid in PBS containing 50% glycerol, 0.5% BSA and 0.02% sodium azide.
Source :	Rabbit
Dilution :	Western Blot: 1/500 - 1/2000. Immunohistochemistry: 1/100 - 1/300. ELISA: 1/5000. Not yet tested in other applications.
Purification :	The antibody was affinity-purified from rabbit antiserum by affinity-chromatography using epitope-specific immunogen.
Concentration :	1 mg/ml
Storage_stability :	-20°C/1 year
Msds :	MSDS_Antibody.pdf
Other_name :	NFKB1B; IKBB; TRIP9; NF-kappa-B inhibitor beta; NF-kappa-BIB; I-kappa-B-beta; IkB-B; IkB-beta; IkappaBbeta; Thyroid receptor-interacting protein 9; TR-interacting protein 9; TRIP-9
Molecular Weight :	37KD

Product Images



Western Blot analysis of 293 cells using Phospho-IκB-β (T19) Polyclonal Antibody



Immunohistochemical analysis of paraffin-embedded Human brain. Antibody was diluted at 1:100(4°,overnight). High-pressure and temperature Tris-EDTA,pH8.0 was used for antigen retrieval. Negative contrl (right) obtaned from antibody was pre-absorbed by immunogen peptide.