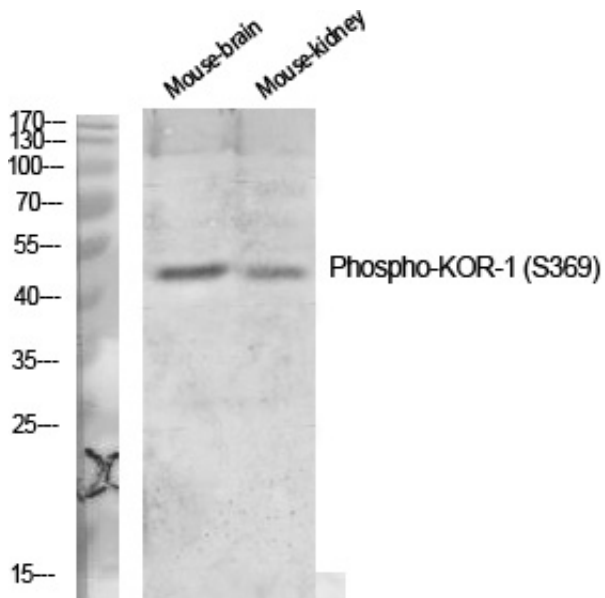


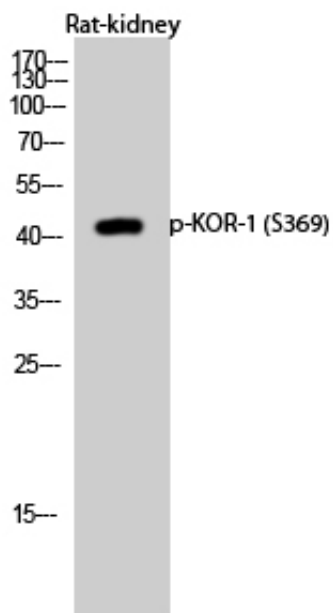
KOR-1 (phospho Ser369) Polyclonal Antibody

Catalog_no :	AP0301
Applications :	WB,IHC-p,ELISA
Reactivity :	Mouse,Rat
Category :	抗原抗体
Size :	100µg/50µg/20µg
Gene_name :	OPRK1
Protein_name :	Kappa-type opioid receptor
Mousegene_id :	18387
Ratgene_id :	29335
Ratswissprot_no :	P34975
Immunogen :	The antiserum was produced against synthesized peptide derived from mouse KOR-1 around the phosphorylation site of Ser369. AA range:331-380
Specificity :	Phospho-KOR-1 (S369) Polyclonal Antibody detects endogenous levels of KOR-1 protein only when phosphorylated at S369.
Formulation :	Liquid in PBS containing 50% glycerol, 0.5% BSA and 0.02% sodium azide.
Source :	Rabbit
Dilution :	Western Blot: 1/500 - 1/2000. Immunohistochemistry: 1/100 - 1/300. ELISA: 1/10000. Not yet tested in other applications.
Purification :	The antibody was affinity-purified from rabbit antiserum by affinity-chromatography using epitope-specific immunogen.
Concentration :	1 mg/ml
Storage_stability :	-20°C/1 year
Msds :	MSDS_Antibody.pdf
Other_name :	OPRK1; OPRK; Kappa-type opioid receptor; K-OR-1; KOR-1
Molecular Weight :	42KD

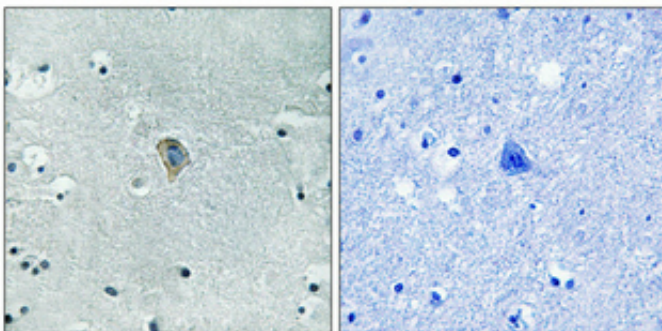
Product Images



Western Blot analysis of various cells using Phospho-KOR-1 (S369) Polyclonal Antibody diluted at 1 : 1000



Western Blot analysis of Rat-kidney cells using Phospho-KOR-1 (S369) Polyclonal Antibody diluted at 1 : 1000



Immunohistochemical analysis of paraffin-embedded Human brain. Antibody was diluted at 1:100(4°,overnight). High-pressure and temperature Tris-EDTA,pH8.0 was used for antigen retrieval. Negative contrl (right) obtaned from antibody was pre-absorbed by immunogen peptide.