

FoxO1/3 (phospho Ser322/S325) Polyclonal Antibody

Catalog_no :	AP0305
Applications :	WB,IHC-p,ELISA
Reactivity :	Human,Mouse,Rat
Category :	抗原抗体
Size :	100µg/50µg/20µg
Gene_name :	FOXO1/FOXO3
Protein_name :	Forkhead box protein O1/3
Humangene_id :	2308
Humanswissprot_no :	Q12778/O43524
Mousegene_id :	56458/56484
Ratgene_id :	84482
Ratswissprot_no :	G3V7R4
Immunogen :	The antiserum was produced against synthesized peptide derived from human FOXO1A/3A around the phosphorylation site of Ser322 and Ser325. AA range:291-340
Specificity :	Phospho-FoxO1/3 (S322/S325) Polyclonal Antibody detects endogenous levels of FoxO1/3 protein only when phosphorylated at S322/S325.
Formulation :	Liquid in PBS containing 50% glycerol, 0.5% BSA and 0.02% sodium azide.
Source :	Rabbit
Dilution :	Western Blot: 1/500 - 1/2000. Immunohistochemistry: 1/100 - 1/300. ELISA: 1/5000. Not yet tested in other applications.
Purification :	The antibody was affinity-purified from rabbit antiserum by affinity-chromatography using epitope-specific immunogen.
Concentration :	1 mg/ml
Storage_stability :	-20°C/1 year
Msds :	MSDS_Antibody.pdf
Other_name :	FOXO1; FKHR; FOXO1A; Forkhead box protein O1; Forkhead box protein O1A; Forkhead

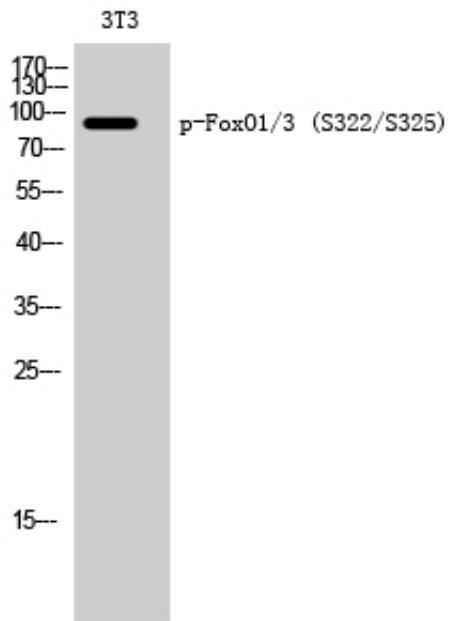


in rhabdomyosarcoma; FOXO3; FKHL1; FOXO3A; Forkhead box protein O3; AF6q21 protein; Forkhead in rhabdomyosarcoma-like 1

Molecular
Weight :

97KD

Product Images



Western Blot analysis of 3T3 cells using Phospho-FoxO1/3 (S322/S325) Polyclonal Antibody