

## c-Fms (phospho Tyr809) Polyclonal Antibody

Catalog_no :	AP0308
Applications :	WB,ELISA
Reactivity :	Human,Mouse,Rat
Category :	抗原抗体
Size :	100µg/50µg/20µg
Gene_name :	CSF1R
Protein_name :	Macrophage colony-stimulating factor 1 receptor
Humangene_id	<a href="#">1436</a>
:	
Humanswissprot	<a href="#">P07333</a>
_no :	
Mousegene_id :	<a href="#">12978</a>
Mouseswissprot	<a href="#">P09581</a>
_no :	
Ratswissprot_no	<a href="#">Q00495</a>
:	
Immunogen :	The antiserum was produced against synthesized peptide derived from human M-CSF Receptor around the phosphorylation site of Tyr809. AA range:781-830
Specificity :	Phospho-c-Fms (Y809) Polyclonal Antibody detects endogenous levels of c-Fms protein only when phosphorylated at Y809.
Formulation :	Liquid in PBS containing 50% glycerol, 0.5% BSA and 0.02% sodium azide.
Source :	Rabbit
Dilution :	Western Blot: 1/500 - 1/2000. ELISA: 1/5000. Not yet tested in other applications.
Purification :	The antibody was affinity-purified from rabbit antiserum by affinity-chromatography using epitope-specific immunogen.
Concentration :	1 mg/ml
Storage_stability	-20°C/1 year
:	
Msds :	<a href="#">MSDS_Antibody.pdf</a>
Other_name :	CSF1R; FMS; Macrophage colony-stimulating factor 1 receptor; CSF-1 receptor; CSF-1-R;



CSF-1R; M-CSF-R; Proto-oncogene c-Fms; CD antigen CD115

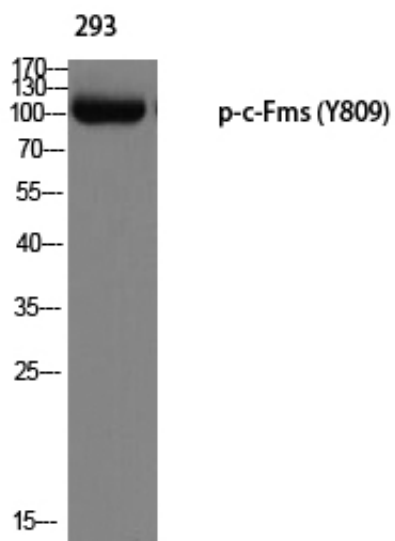
---

Molecular  
Weight :

108KD

---

## Product Images



Western blot analysis of 293 using p-c-Fms (Y809) antibody.