

## Met (phospho Tyr1356) Polyclonal Antibody

Catalog_no :	AP0309
Applications :	WB,ELISA
Reactivity :	Human,Mouse,Rat
Category :	抗原抗体
Size :	100µg/50µg/20µg
Gene_name :	MET
Protein_name :	Hepatocyte growth factor receptor
Humangene_id	<a href="#">4233</a>
:	
Humanswissprot	<a href="#">P08581</a>
_no :	
Mouseswissprot	<a href="#">P16056</a>
_no :	
Ratgene_id :	<a href="#">24553</a>
Ratswissprot_no	<a href="#">P97523</a>
:	
Immunogen :	The antiserum was produced against synthesized peptide derived from human Met around the phosphorylation site of Tyr1356. AA range:1331-1380
Specificity :	Phospho-Met (Y1356) Polyclonal Antibody detects endogenous levels of Met protein only when phosphorylated at Y1356.
Formulation :	Liquid in PBS containing 50% glycerol, 0.5% BSA and 0.02% sodium azide.
Source :	Rabbit
Dilution :	Western Blot: 1/500 - 1/2000. ELISA: 1/10000. Not yet tested in other applications.
Purification :	The antibody was affinity-purified from rabbit antiserum by affinity-chromatography using epitope-specific immunogen.
Concentration :	1 mg/ml
Storage_stability	-20°C/1 year
:	
Msds :	<a href="#">MSDS_Antibody.pdf</a>
Other_name :	MET; Hepatocyte growth factor receptor; HGF receptor; HGF/SF receptor; Proto-



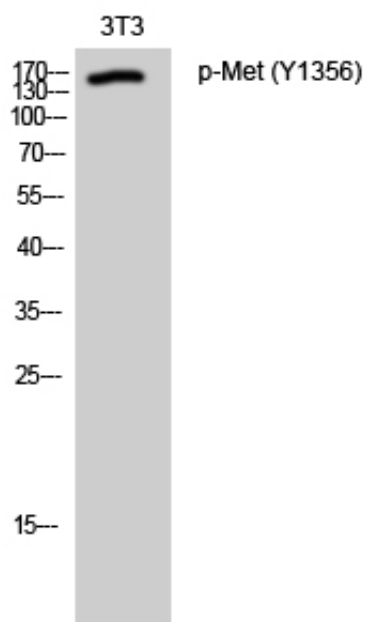
oncogene c-Met; Scatter factor receptor; SF receptor; Tyrosine-protein kinase Met

Molecular  
Weight :

160KD

---

## Product Images



Western Blot analysis of 3T3 cells using Phospho-Met (Y1356) Polyclonal Antibody