

## Akt1 (phospho Ser129) Polyclonal Antibody

Catalog_no :	AP0324
Applications :	WB,ELISA
Reactivity :	Human,Mouse,Rat
Category :	抗原抗体
Size :	100µg/50µg/20µg
Gene_name :	AKT1
Protein_name :	RAC-alpha serine/threonine-protein kinase
Humangene_id :	<a href="#">207</a>
Humanswissprot_no :	<a href="#">P31749</a>
Mousegene_id :	<a href="#">11651</a>
Mouseswissprot_no :	<a href="#">P31750</a>
Ratgene_id :	<a href="#">24185</a>
Ratswissprot_no :	<a href="#">P47196</a>
Immunogen :	The antiserum was produced against synthesized peptide derived from human Akt around the phosphorylation site of Ser129. AA range:95-144
Specificity :	Phospho-Akt1 (S129) Polyclonal Antibody detects endogenous levels of Akt1 protein only when phosphorylated at S129.
Formulation :	Liquid in PBS containing 50% glycerol, 0.5% BSA and 0.02% sodium azide.
Source :	Rabbit
Dilution :	Western Blot: 1/500 - 1/2000. ELISA: 1/5000. Not yet tested in other applications.
Purification :	The antibody was affinity-purified from rabbit antiserum by affinity-chromatography using epitope-specific immunogen.
Concentration :	1 mg/ml
Storage_stability :	-20°C/1 year
Msds :	MSDS_Antibody.pdf



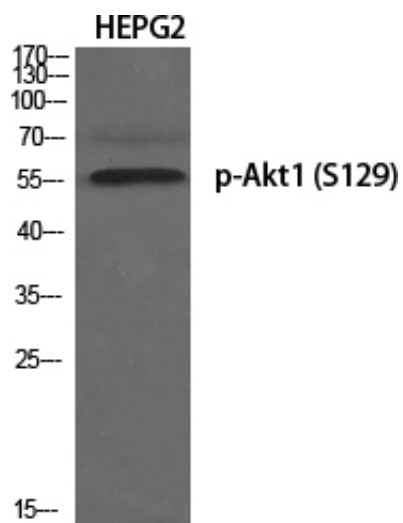
Other\_name : AKT1; PKB; RAC; RAC-alpha serine/threonine-protein kinase; Protein kinase B; PKB;  
Protein kinase B alpha; PKB alpha; Proto-oncogene c-Akt; RAC-PK-alpha

---

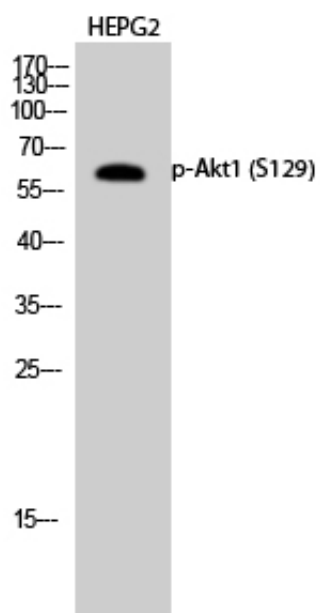
Molecular Weight : 65KD

---

## Product Images



Western Blot analysis of various cells using Phospho-Akt1 (S129) Polyclonal Antibody diluted at 1 : 1000



Western Blot analysis of HEPG2 cells using Phospho-Akt1 (S129) Polyclonal Antibody diluted at 1 : 1000