

MEK-1 (phospho Ser298) Polyclonal Antibody

Catalog_no :	AP0329
Applications :	WB,IHC-p,ELISA
Reactivity :	Human,Mouse,Rat
Category :	抗原抗体
Size :	100µg/50µg/20µg
Gene_name :	MAP2K1
Protein_name :	Dual specificity mitogen-activated protein kinase kinase 1
Humangene_id	5604
:	
Humanswissprot	Q02750
_no :	
Mousegene_id :	26395
Mouseswissprot	P31938
_no :	
Ratgene_id :	170851
Ratswissprot_no	Q01986
:	
Immunogen :	The antiserum was produced against synthesized peptide derived from human MEK1 around the phosphorylation site of Ser298. AA range:264-313
Specificity :	Phospho-MEK-1 (S298) Polyclonal Antibody detects endogenous levels of MEK-1 protein only when phosphorylated at S298.
Formulation :	Liquid in PBS containing 50% glycerol, 0.5% BSA and 0.02% sodium azide.
Source :	Rabbit
Dilution :	Western Blot: 1/500 - 1/2000. Immunohistochemistry: 1/100 - 1/300. ELISA: 1/10000. Not yet tested in other applications.
Purification :	The antibody was affinity-purified from rabbit antiserum by affinity-chromatography using epitope-specific immunogen.
Concentration :	1 mg/ml
Storage_stability	-20°C/1 year
:	

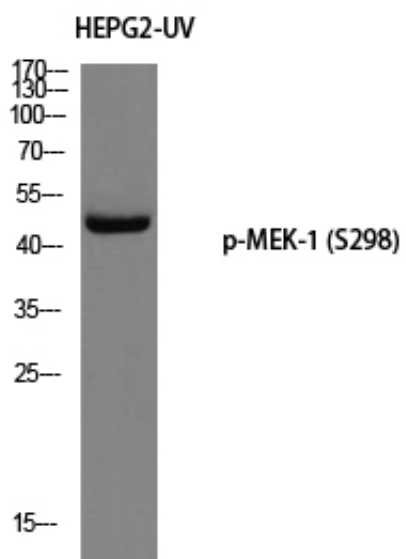


MsdS : [MSDS_Antibody.pdf](#)

Other_name : [MAP2K1; MEK1; PRKMK1; Dual specificity mitogen-activated protein kinase kinase 1; MAP kinase kinase 1; MAPKK 1; MKK1; ERK activator kinase 1; MAPK/ERK kinase 1; MEK 1](#)

Molecular Weight : [45KD](#)

Product Images



Western blot analysis of HEPG2-UV using p-MEK-1 (S298) antibody. Antibody was diluted at 1:500