

## PKD1 (phospho Ser910) Polyclonal Antibody

Catalog_no :	AP0332
Applications :	WB,IHC-p,ELISA
Reactivity :	Human,Mouse,Rat
Category :	抗原抗体
Size :	100µg/50µg/20µg
Gene_name :	PRKD1
Protein_name :	Serine/threonine-protein kinase D1
Humangene_id	<a href="#">5587</a>
:	
Humanswissprot	<a href="#">Q15139</a>
_no :	
Mousegene_id :	<a href="#">18760</a>
Mouseswissprot	<a href="#">Q62101</a>
_no :	
Ratgene_id :	<a href="#">85421</a>
Ratswissprot_no	<a href="#">Q9WTQ1</a>
:	
Immunogen :	The antiserum was produced against synthesized peptide derived from human PKD1/PKC mu around the phosphorylation site of Ser910. AA range:863-912
Specificity :	Phospho-PKD1 (S910) Polyclonal Antibody detects endogenous levels of PKD1 protein only when phosphorylated at S910.
Formulation :	Liquid in PBS containing 50% glycerol, 0.5% BSA and 0.02% sodium azide.
Source :	Rabbit
Dilution :	Western Blot: 1/500 - 1/2000. ELISA: 1/10000. Not yet tested in other applications.
Purification :	The antibody was affinity-purified from rabbit antiserum by affinity-chromatography using epitope-specific immunogen.
Concentration :	1 mg/ml
Storage_stability	-20°C/1 year
:	
Msds :	MSDS_Antibody.pdf



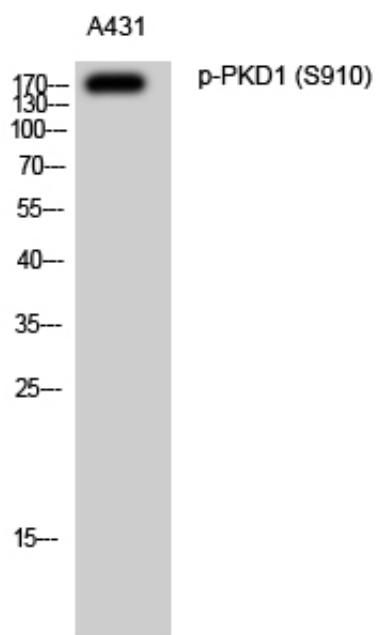
Other\_name : PRKD1; PKD; PKD1; PRKCM; Serine/threonine-protein kinase D1; Protein kinase C mu type; Protein kinase D; nPKC-D1; nPKC-mu

---

Molecular Weight : 117KD

---

## Product Images



Western Blot analysis of A431 cells using Phospho-PKD1 (S910) Polyclonal Antibody