

SGK1 (phospho Ser78) Polyclonal Antibody

Catalog_no :	AP0333
Applications :	WB,ELISA
Reactivity :	Human,Mouse,Rat
Category :	抗原抗体
Size :	100µg/50µg/20µg
Gene_name :	SGK1
Protein_name :	Serine/threonine-protein kinase Sgk1
Humangene_id :	6446
Humanswissprot_no :	O00141
Mousegene_id :	20393
Mouseswissprot_no :	Q9WVC6
Ratswissprot_no :	Q06226
Immunogen :	The antiserum was produced against synthesized peptide derived from human SGK around the phosphorylation site of Ser78. AA range:41-90
Specificity :	Phospho-SGK1 (S78) Polyclonal Antibody detects endogenous levels of SGK1 protein only when phosphorylated at S78.
Formulation :	Liquid in PBS containing 50% glycerol, 0.5% BSA and 0.02% sodium azide.
Source :	Rabbit
Dilution :	Western Blot: 1/500 - 1/2000. ELISA: 1/10000. Not yet tested in other applications.
Purification :	The antibody was affinity-purified from rabbit antiserum by affinity-chromatography using epitope-specific immunogen.
Concentration :	1 mg/ml
Storage_stability :	-20°C/1 year
Msds :	MSDS_Antibody.pdf
Other_name :	SGK1; SGK; Serine/threonine-protein kinase Sgk1; Serum/glucocorticoid-regulated

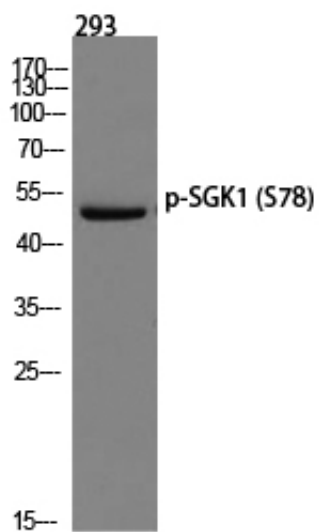


kinase 1

Molecular
Weight :

54KD

Product Images



Western blot analysis of 293 using p-SGK1 (S78) antibody. Antibody was diluted at 1:2000