

## SHIP-1 (phospho Tyr1021) Polyclonal Antibody

Catalog_no :	AP0334
Applications :	WB,ELISA
Reactivity :	Human,Mouse,Rat
Category :	抗原抗体
Size :	100µg/50µg/20µg
Gene_name :	INPP5D
Protein_name :	Phosphatidylinositol 3,4,5-trisphosphate 5-phosphatase 1
Humangene_id :	<a href="#">3635</a>
Humanswissprot_no :	<a href="#">Q92835</a>
Mousegene_id :	<a href="#">16331</a>
Mouseswissprot_no :	<a href="#">Q9ES52</a>
Ratgene_id :	<a href="#">54259</a>
Ratswissprot_no :	<a href="#">P97573</a>
Immunogen :	The antiserum was produced against synthesized peptide derived from human SHIP1 around the phosphorylation site of Tyr1021. AA range:987-1036
Specificity :	Phospho-SHIP-1 (Y1021) Polyclonal Antibody detects endogenous levels of SHIP-1 protein only when phosphorylated at Y1021.
Formulation :	Liquid in PBS containing 50% glycerol, 0.5% BSA and 0.02% sodium azide.
Source :	Rabbit
Dilution :	Western Blot: 1/500 - 1/2000. ELISA: 1/40000. Not yet tested in other applications.
Purification :	The antibody was affinity-purified from rabbit antiserum by affinity-chromatography using epitope-specific immunogen.
Concentration :	1 mg/ml
Storage_stability :	-20°C/1 year
Msds :	MSDS_Antibody.pdf



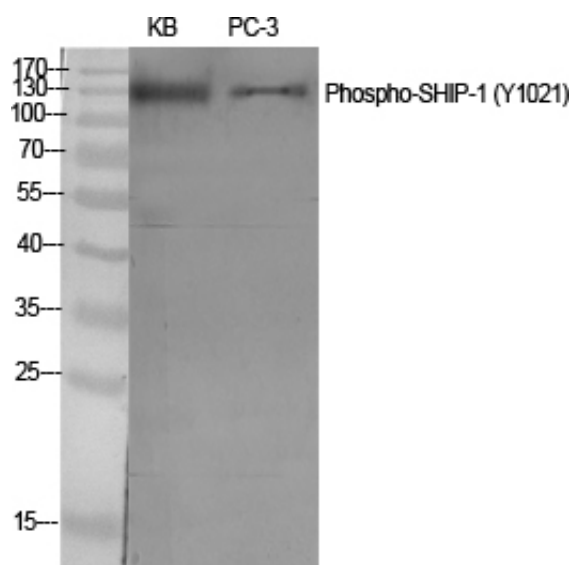
Other\_name : INPP5D; SHIP; SHIP1; Phosphatidylinositol 3; 4,5-trisphosphate 5-phosphatase 1; Inositol polyphosphate-5-phosphatase of 145 kDa; SIP-145; SH2 domain-containing inositol 5'-phosphatase 1; SH2 domain-containing inositol phosphatase 1; SHIP-1;

---

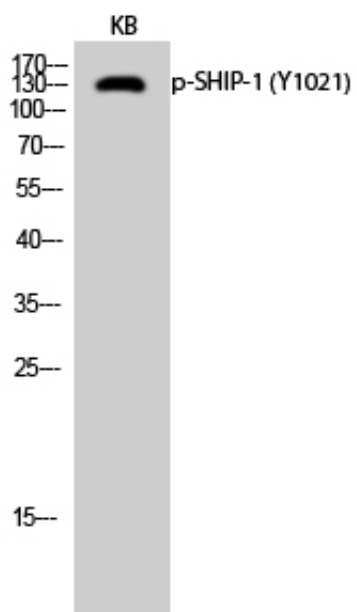
Molecular Weight : 133KD

---

## Product Images



Western Blot analysis of various cells using Phospho-SHIP-1 (Y1021) Polyclonal Antibody diluted at 1 : 500



Western Blot analysis of KB cells using Phospho-SHIP-1 (Y1021) Polyclonal Antibody diluted at 1 : 500