



ATRIP (phospho Ser68) Polyclonal Antibody

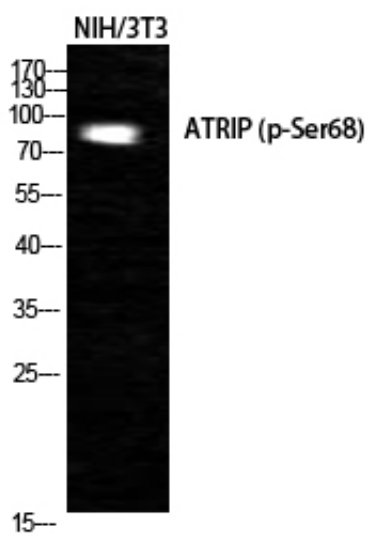
Catalog_no :	AP0336
Applications :	WB,ELISA
Reactivity :	Human,Mouse,Rat
Category :	抗原抗体
Size :	100µg/50µg/20µg
Gene_name :	ATRIP
Protein_name :	ATR-interacting protein
Humangene_id	84126
:	
Humanswissprot	Q8WXE1
_no :	
Mousegene_id :	235610
Mouseswissprot	Q8BMG1
_no :	
Immunogen :	The antiserum was produced against synthesized peptide derived from human ATRIP around the phosphorylation site of Ser68. AA range:34-83
Specificity :	Phospho-ATRIP (S68) Polyclonal Antibody detects endogenous levels of ATRIP protein only when phosphorylated at S68.
Formulation :	Liquid in PBS containing 50% glycerol, 0.5% BSA and 0.02% sodium azide.
Source :	Rabbit
Dilution :	Western Blot: 1/500 - 1/2000. ELISA: 1/40000. Not yet tested in other applications.
Purification :	The antibody was affinity-purified from rabbit antiserum by affinity-chromatography using epitope-specific immunogen.
Concentration :	1 mg/ml
Storage_stability	-20°C/1 year
:	
Msds :	MSDS_Antibody.pdf
Other_name :	ATRIP; AGS1; ATR-interacting protein; ATM and Rad3-related-interacting protein
Molecular Weight :	80KD



专注二抗产品

Biodragon旗下品牌

Product Images



Western Blot analysis of NIH-3T3 cells using Phospho-ATRIP (S68) Polyclonal Antibody cells nucleus extracted by Minute TM Cytoplasmic and Nuclear Fractionation kit (SC-003, Inventbiotech, MN, USA).