

PKC α (phospho Tyr657) Polyclonal Antibody

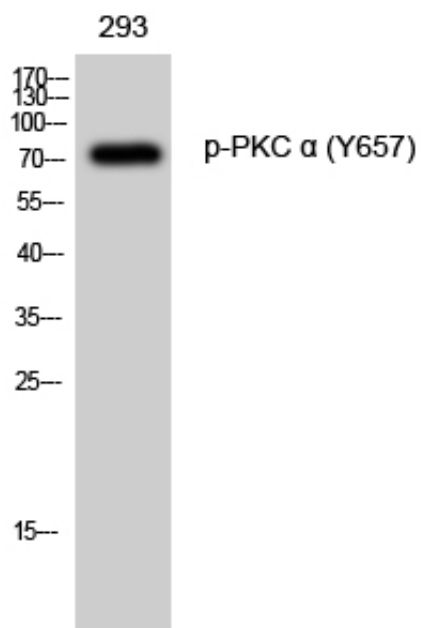
Catalog_no :	AP0339
Applications :	WB,ELISA
Reactivity :	Human,Mouse,Rat
Category :	抗原抗体
Size :	100 μ g/50 μ g/20 μ g
Gene_name :	PRKCA
Protein_name :	Protein kinase C alpha type
Humangene_id	5578
:	
Humanswissprot	P17252
_no :	
Mousegene_id :	18750
Mouseswissprot	P20444
_no :	
Ratswissprot_no	P05696
:	
Immunogen :	The antiserum was produced against synthesized peptide derived from human PKC alpha around the phosphorylation site of Tyr657. AA range:623-672
Specificity :	Phospho-PKC α (Y657) Polyclonal Antibody detects endogenous levels of PKC α protein only when phosphorylated at Y657.
Formulation :	Liquid in PBS containing 50% glycerol, 0.5% BSA and 0.02% sodium azide.
Source :	Rabbit
Dilution :	Western Blot: 1/500 - 1/2000. ELISA: 1/10000. Not yet tested in other applications.
Purification :	The antibody was affinity-purified from rabbit antiserum by affinity-chromatography using epitope-specific immunogen.
Concentration :	1 mg/ml
Storage_stability	-20°C/1 year
:	
Msds :	MSDS_Antibody.pdf
Other_name :	PRKCA; PKCA; PRKACA; Protein kinase C alpha type; PKC-A; PKC-alpha



Molecular
Weight :

80KD

Product Images



Western Blot analysis of 293 cells using Phospho-PKC α (Y657) Polyclonal Antibody diluted at 1 : 1000