

PKD2 (phospho Ser876) Polyclonal Antibody

Catalog_no :	AP0341
Applications :	WB,IHC-p,ELISA
Reactivity :	Human,Mouse,Rat
Category :	抗原抗体
Size :	100µg/50µg/20µg
Gene_name :	PRKD2
Protein_name :	Serine/threonine-protein kinase D2
Humangene_id :	25865
Humanswissprot_no :	Q9BZL6
Mousegene_id :	101540
Mouseswissprot_no :	Q8BZ03
Ratgene_id :	292658
Ratswissprot_no :	Q5XIS9
Immunogen :	The antiserum was produced against synthesized peptide derived from human PKD2 around the phosphorylation site of Ser876. AA range:829-878
Specificity :	Phospho-PKD2 (S876) Polyclonal Antibody detects endogenous levels of PKD2 protein only when phosphorylated at S876.
Formulation :	Liquid in PBS containing 50% glycerol, 0.5% BSA and 0.02% sodium azide.
Source :	Rabbit
Dilution :	Western Blot: 1/500 - 1/2000. Immunohistochemistry: 1/100 - 1/300. ELISA: 1/40000. Not yet tested in other applications.
Purification :	The antibody was affinity-purified from rabbit antiserum by affinity-chromatography using epitope-specific immunogen.
Concentration :	1 mg/ml
Storage_stability :	-20°C/1 year

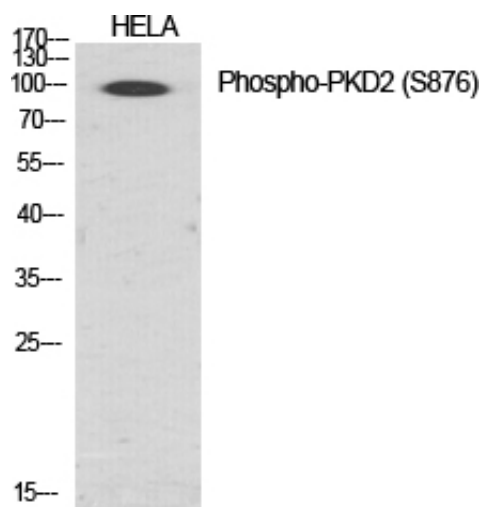


Msd : MSDS_Antibody.pdf

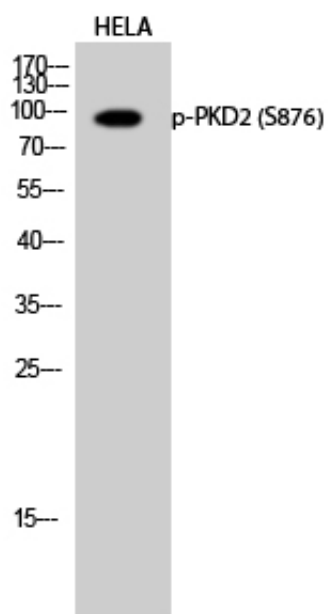
Other_name : PRKD2; PKD2; HSPC187; Serine/threonine-protein kinase D2; nPKC-D2

Molecular Weight : 96KD

Product Images



Western Blot analysis of various cells using Phospho-PKD2 (S876) Polyclonal Antibody diluted at 1 : 1000



Western Blot analysis of HELA cells using Phospho-PKD2 (S876) Polyclonal Antibody diluted at 1 : 1000