

Akt (phospho Tyr326) Polyclonal Antibody

Catalog_no :	AP0343
Applications :	WB,ELISA
Reactivity :	Human,Mouse,Rat
Category :	抗原抗体
Size :	100µg/50µg/20µg
Gene_name :	AKT1
Protein_name :	RAC-alpha serine/threonine-protein kinase
Humangene_id :	207
Humanswissprot_no :	P31749
Mousegene_id :	11651
Mouseswissprot_no :	P31750
Ratgene_id :	24185
Ratswissprot_no :	P47196
Immunogen :	The antiserum was produced against synthesized peptide derived from human Akt around the phosphorylation site of Tyr326. AA range:292-341
Specificity :	Phospho-Akt (Y326) Polyclonal Antibody detects endogenous levels of Akt protein only when phosphorylated at Y326.
Formulation :	Liquid in PBS containing 50% glycerol, 0.5% BSA and 0.02% sodium azide.
Source :	Rabbit
Dilution :	Western Blot: 1/500 - 1/2000. ELISA: 1/20000. Not yet tested in other applications.
Purification :	The antibody was affinity-purified from rabbit antiserum by affinity-chromatography using epitope-specific immunogen.
Concentration :	1 mg/ml
Storage_stability :	-20°C/1 year
Msds :	MSDS_Antibody.pdf

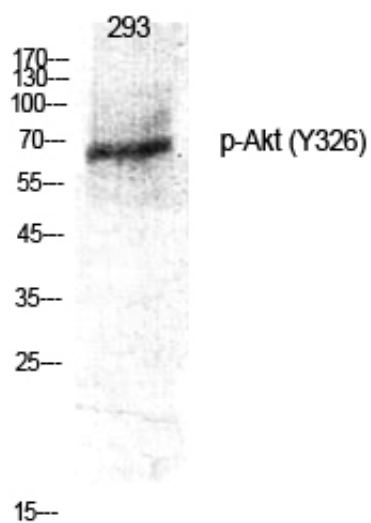


Other_name : AKT1; PKB; RAC; RAC-alpha serine/threonine-protein kinase; Protein kinase B; PKB;
Protein kinase B alpha; PKB alpha; Proto-oncogene c-Akt; RAC-PK-alpha

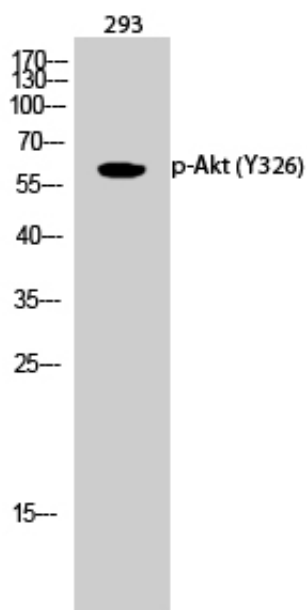
Molecular Weight : 60KD

Product Images

Western Blot analysis of various cells using Phospho-Akt (Y326) Polyclonal Antibody diluted at 1 : 1000



Western Blot analysis of 293 cells using Phospho-Akt (Y326) Polyclonal Antibody diluted at 1 : 1000



Western Blot analysis of KB using Phospho-Akt (Y326) Polyclonal Antibody diluted at 1 : 1000

