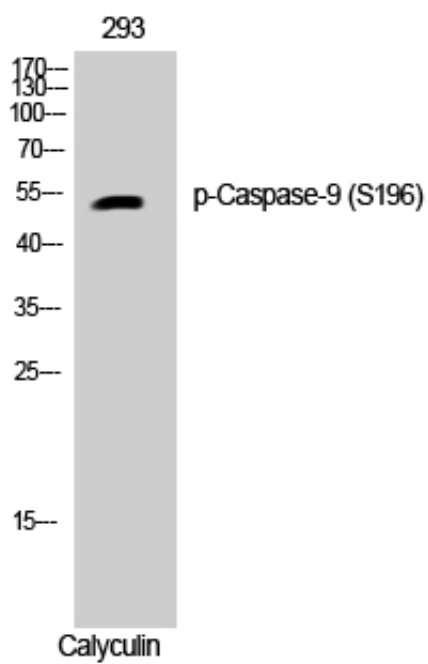


## Caspase-9 (phospho Ser196) Polyclonal Antibody

Catalog_no :	AP0345
Applications :	WB,IHC-p,ELISA
Reactivity :	Human
Category :	抗原抗体
Size :	100µg/50µg/20µg
Gene_name :	CASP9
Protein_name :	Caspase-9
Humangene_id :	<a href="#">842</a>
Humanswissprot_no :	<a href="#">P55211</a>
Immunogen :	The antiserum was produced against synthesized peptide derived from human Caspase 9 around the phosphorylation site of Ser196. AA range:162-211
Specificity :	Phospho-Caspase-9 (S196) Polyclonal Antibody detects endogenous levels of Caspase-9 protein only when phosphorylated at S196.
Formulation :	Liquid in PBS containing 50% glycerol, 0.5% BSA and 0.02% sodium azide.
Source :	Rabbit
Dilution :	Western Blot: 1/500 - 1/2000. Immunohistochemistry: 1/100 - 1/300. ELISA: 1/20000. Not yet tested in other applications.
Purification :	The antibody was affinity-purified from rabbit antiserum by affinity-chromatography using epitope-specific immunogen.
Concentration :	1 mg/ml
Storage_stability :	-20°C/1 year
Msds :	<a href="#">MSDS_Antibody.pdf</a>
Other_name :	CASP9; MCH6; Caspase-9; CASP-9; Apoptotic protease Mch-6; Apoptotic protease-activating factor 3; APAF-3; ICE-like apoptotic protease 6; ICE-LAP6
Molecular Weight :	50KD

## Product Images



Western Blot analysis of 293 cells using Phospho-Caspase-9 (S196) Polyclonal Antibody diluted at 1 : 1000