

## CD44 (phospho Ser706) Polyclonal Antibody

Catalog_no :	AP0349
Applications :	WB,ELISA
Reactivity :	Human,Mouse,Rat
Category :	抗原抗体
Size :	100µg/50µg/20µg
Gene_name :	CD44
Protein_name :	CD44 antigen
Humangene_id	<a href="#">960</a>
:	
Humanswissprot	<a href="#">P16070</a>
_no :	
Mousegene_id :	<a href="#">12505</a>
Mouseswissprot	<a href="#">P15379</a>
_no :	
Ratswissprot_no	<a href="#">P26051</a>
:	
Immunogen :	The antiserum was produced against synthesized peptide derived from human CD44 around the phosphorylation site of Ser706. AA range:681-730
Specificity :	Phospho-CD44 (S706) Polyclonal Antibody detects endogenous levels of CD44 protein only when phosphorylated at S706.
Formulation :	Liquid in PBS containing 50% glycerol, 0.5% BSA and 0.02% sodium azide.
Source :	Rabbit
Dilution :	Western Blot: 1/500 - 1/2000. ELISA: 1/20000. Not yet tested in other applications.
Purification :	The antibody was affinity-purified from rabbit antiserum by affinity-chromatography using epitope-specific immunogen.
Concentration :	1 mg/ml
Storage_stability	-20°C/1 year
:	
Msds :	MSDS_Antibody.pdf
Other_name :	CD44; LHR; MDU2; MDU3; MIC4; CD44 antigen; CDw44; Epican; Extracellular matrix



receptor III; ECMR-III; GP90 lymphocyte homing/adhesion receptor; HUTCH-I; Heparan sulfate proteoglycan; Hermes antigen; Hyaluronate receptor; Phagocytic glycopr

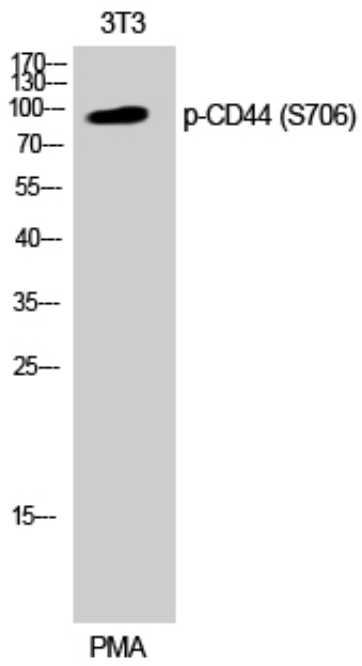
---

Molecular  
Weight :

90KD

---

## Product Images



Western Blot analysis of 3T3 cells using Phospho-CD44 (S706) Polyclonal Antibody