

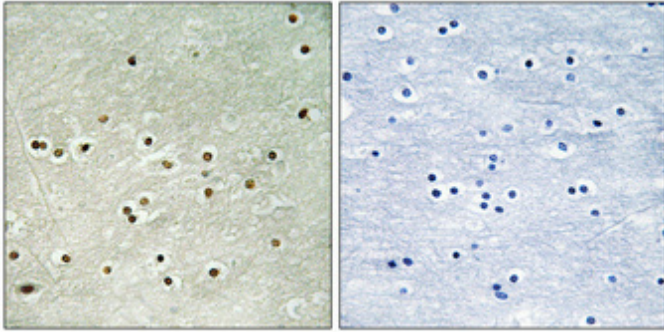
MCM4 (phospho Ser54) Polyclonal Antibody

Catalog_no :	AP0354
Applications :	WB,IHC-p,ELISA
Reactivity :	Human,Mouse,Monkey
Category :	抗原抗体
Size :	100µg/50µg/20µg
Gene_name :	MCM4
Protein_name :	DNA replication licensing factor MCM4
Humangene_id	4173
:	
Humanswissprot	P33991
_no :	
Mousegene_id :	17217
Mouseswissprot	P49717
_no :	
Immunogen :	The antiserum was produced against synthesized peptide derived from human MCM4 around the phosphorylation site of Ser54. AA range:20-69
Specificity :	Phospho-MCM4 (S54) Polyclonal Antibody detects endogenous levels of MCM4 protein only when phosphorylated at S54.
Formulation :	Liquid in PBS containing 50% glycerol, 0.5% BSA and 0.02% sodium azide.
Source :	Rabbit
Dilution :	Western Blot: 1/500 - 1/2000. Immunohistochemistry: 1/100 - 1/300. ELISA: 1/20000. Not yet tested in other applications.
Purification :	The antibody was affinity-purified from rabbit antiserum by affinity-chromatography using epitope-specific immunogen.
Concentration :	1 mg/ml
Storage_stability	-20°C/1 year
:	
Msds :	MSDS_Antibody.pdf
Other_name :	MCM4; CDC21; DNA replication licensing factor MCM4; CDC21 homolog; P1-CDC21
Molecular	85KD



Weight :

Product Images



Immunohistochemical analysis of paraffin-embedded Human brain. Antibody was diluted at 1:100(4°,overnight). High-pressure and temperature Tris-EDTA,pH8.0 was used for antigen retrieval. Negative contrl (right) obtaned from antibody was pre-absorbed by immunogen peptide.