

Ephrin-B1 (phospho Tyr317) Polyclonal Antibody

Catalog_no :	AP0356
Applications :	WB,ELISA
Reactivity :	Human,Mouse,Rat
Category :	抗原抗体
Size :	100µg/50µg/20µg
Gene_name :	EFNB1
Protein_name :	Ephrin-B1
Humangene_id :	1947
Humanswissprot_no :	P98172
Mousegene_id :	13641
Mouseswissprot_no :	P52795
Ratswissprot_no :	P52796
Immunogen :	The antiserum was produced against synthesized peptide derived from human EFNB1 around the phosphorylation site of Tyr317. AA range:283-332
Specificity :	Phospho-Ephrin-B1 (Y317) Polyclonal Antibody detects endogenous levels of Ephrin-B1 protein only when phosphorylated at Y317.
Formulation :	Liquid in PBS containing 50% glycerol, 0.5% BSA and 0.02% sodium azide.
Source :	Rabbit
Dilution :	Western Blot: 1/500 - 1/2000. ELISA: 1/20000. Not yet tested in other applications.
Purification :	The antibody was affinity-purified from rabbit antiserum by affinity-chromatography using epitope-specific immunogen.
Concentration :	1 mg/ml
Storage_stability :	-20°C/1 year
Msds :	MSDS_Antibody.pdf
Other_name :	EFNB1; EFL3; EPLG2; LERK2; Ephrin-B1; EFL-3; ELK ligand; ELK-L; EPH-related receptor

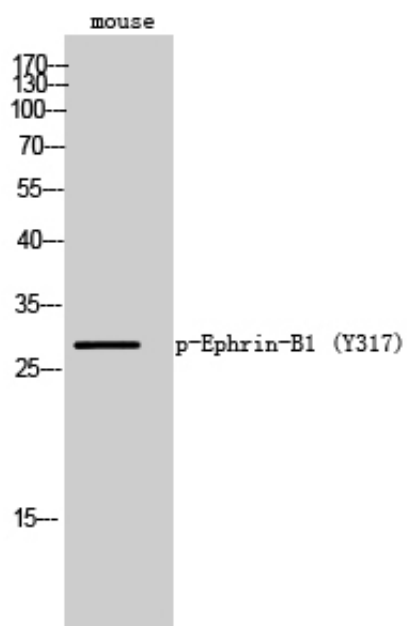


tyrosine kinase ligand 2; LERK-2

Molecular
Weight :

30KD

Product Images



Western Blot analysis of mouse cells using Phospho-Ephrin-B1 (Y317) Polyclonal Antibody