

PKA II β reg (phospho Ser113) Polyclonal Antibody

Catalog_no :	AP0360
Applications :	WB,IHC-p,ELISA
Reactivity :	Human,Mouse,Rat,Monkey
Category :	抗原抗体
Size :	100 μ g/50 μ g/20 μ g
Gene_name :	PRKAR2B
Protein_name :	cAMP-dependent protein kinase type II-beta regulatory subunit
Humangene_id :	5577
Humanswissprot_no :	P31323
Mousegene_id :	19088
Mouseswissprot_no :	P31324
Ratgene_id :	24679
Ratswissprot_no :	P12369
Immunogen :	The antiserum was produced against synthesized peptide derived from human PKA-R2 beta around the phosphorylation site of Ser113. AA range:79-128
Specificity :	Phospho-PKA II β reg (S113) Polyclonal Antibody detects endogenous levels of PKA II β reg protein only when phosphorylated at S113.
Formulation :	Liquid in PBS containing 50% glycerol, 0.5% BSA and 0.02% sodium azide.
Source :	Rabbit
Dilution :	Western Blot: 1/500 - 1/2000. Immunohistochemistry: 1/100 - 1/300. ELISA: 1/10000. Not yet tested in other applications.
Purification :	The antibody was affinity-purified from rabbit antiserum by affinity-chromatography using epitope-specific immunogen.
Concentration :	1 mg/ml
Storage_stability :	-20°C/1 year

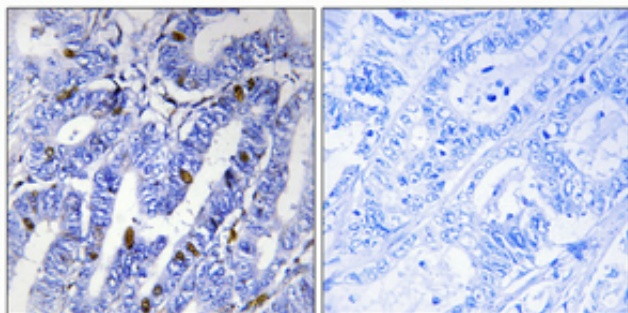


Msd : MSDS_Antibody.pdf

Other_name : PRKAR2B; cAMP-dependent protein kinase type II-beta regulatory subunit

Molecular Weight : 46KD

Product Images



Immunohistochemical analysis of paraffin-embedded Human colon cancer. Antibody was diluted at 1:100(4°,overnight). High-pressure and temperature Tris-EDTA,pH8.0 was used for antigen retrieval. Negative contrl (right) obtaned from antibody was pre-absorbed by immunogen peptide.