

Cdk9 (phospho Thr186) Polyclonal Antibody

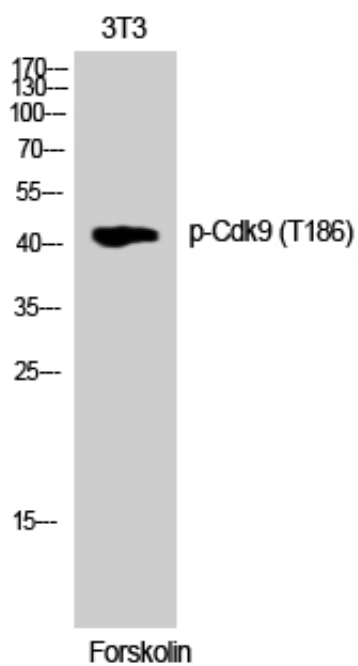
Catalog_no :	AP0365
Applications :	WB,ELISA
Reactivity :	Human,Mouse,Rat
Category :	抗原抗体
Size :	100µg/50µg/20µg
Gene_name :	CDK9
Protein_name :	Cyclin-dependent kinase 9
Humangene_id	1025
:	
Humanswissprot	P50750
_no :	
Mousegene_id :	107951
Mouseswissprot	Q99J95
_no :	
Ratgene_id :	362110
Ratswissprot_no	Q641Z4
:	
Immunogen :	The antiserum was produced against synthesized peptide derived from human CDK9 around the phosphorylation site of Thr186. AA range:152-201
Specificity :	Phospho-Cdk9 (T186) Polyclonal Antibody detects endogenous levels of Cdk9 protein only when phosphorylated at T186.
Formulation :	Liquid in PBS containing 50% glycerol, 0.5% BSA and 0.02% sodium azide.
Source :	Rabbit
Dilution :	Western Blot: 1/500 - 1/2000. ELISA: 1/5000. Not yet tested in other applications.
Purification :	The antibody was affinity-purified from rabbit antiserum by affinity-chromatography using epitope-specific immunogen.
Concentration :	1 mg/ml
Storage_stability	-20°C/1 year
:	
Msds :	MSDS_Antibody.pdf



Other_name : CDK9; CDC2L4; TAK; Cyclin-dependent kinase 9; C-2K; Cell division cycle 2-like protein kinase 4; Cell division protein kinase 9; Serine/threonine-protein kinase PITALRE; Tat-associated kinase complex catalytic subunit

Molecular Weight : 42KD

Product Images



Western Blot analysis of 3T3 cells using Phospho-Cdk9 (T186) Polyclonal Antibody cells nucleus extracted by Minute TM Cytoplasmic and Nuclear Fractionation kit (SC-003, Inventbiotech, MN, USA).