

IL-2R β (phospho Tyr364) Polyclonal Antibody

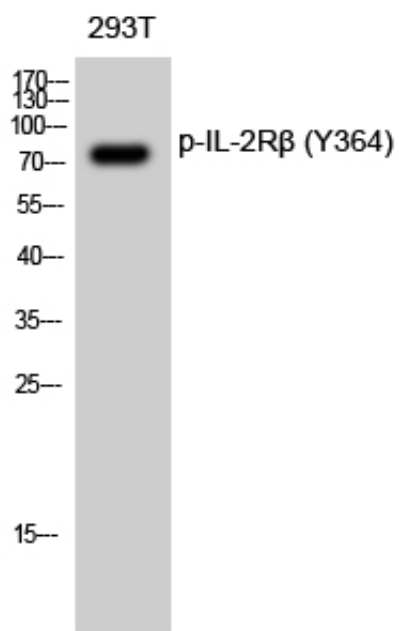
Catalog_no :	AP0370
Applications :	WB,ELISA
Reactivity :	Human,Mouse,Rat,Monkey
Category :	抗原抗体
Size :	100 μ g/50 μ g/20 μ g
Gene_name :	IL2RB
Protein_name :	Interleukin-2 receptor subunit beta
Humangene_id :	3560
Humanswissprot_no :	P14784
Mousegene_id :	16185
Mouseswissprot_no :	P16297
Ratgene_id :	25746
Ratswissprot_no :	P26896
Immunogen :	The antiserum was produced against synthesized peptide derived from human IL-2R beta/CD122 around the phosphorylation site of Tyr364. AA range:331-380
Specificity :	Phospho-IL-2R β (Y364) Polyclonal Antibody detects endogenous levels of IL-2R β protein only when phosphorylated at Y364.
Formulation :	Liquid in PBS containing 50% glycerol, 0.5% BSA and 0.02% sodium azide.
Source :	Rabbit
Dilution :	Western Blot: 1/500 - 1/2000. ELISA: 1/10000. Not yet tested in other applications.
Purification :	The antibody was affinity-purified from rabbit antiserum by affinity-chromatography using epitope-specific immunogen.
Concentration :	1 mg/ml
Storage_stability :	-20°C/1 year
Msds :	MSDS_Antibody.pdf



Other_name : IL2RB; Interleukin-2 receptor subunit beta; IL-2 receptor subunit beta; IL-2R subunit beta; IL-2RB; High affinity IL-2 receptor subunit beta; p70-75; p75; CD antigen CD122

Molecular Weight : 75KD

Product Images



Western Blot analysis of 293T cells using Phospho-IL-2R β (Y364) Polyclonal Antibody diluted at 1 : 500