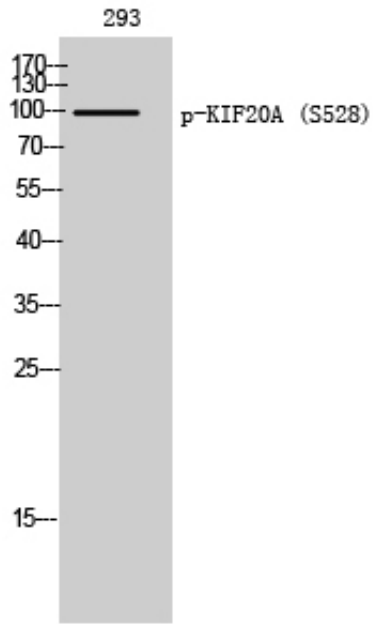


KIF20A (phospho Ser528) Polyclonal Antibody

Catalog_no :	AP0373
Applications :	WB,IHC-p,ELISA
Reactivity :	Human
Category :	抗原抗体
Size :	100µg/50µg/20µg
Gene_name :	KIF20A
Protein_name :	Kinesin-like protein KIF20A
Humangene_id :	10112
Humanswissprot_no :	O95235
Immunogen :	The antiserum was produced against synthesized peptide derived from human KIF20A around the phosphorylation site of Ser528. AA range:501-550
Specificity :	Phospho-KIF20A (S528) Polyclonal Antibody detects endogenous levels of KIF20A protein only when phosphorylated at S528.
Formulation :	Liquid in PBS containing 50% glycerol, 0.5% BSA and 0.02% sodium azide.
Source :	Rabbit
Dilution :	Western Blot: 1/500 - 1/2000. Immunohistochemistry: 1/100 - 1/300. ELISA: 1/5000. Not yet tested in other applications.
Purification :	The antibody was affinity-purified from rabbit antiserum by affinity-chromatography using epitope-specific immunogen.
Concentration :	1 mg/ml
Storage_stability :	-20°C/1 year
Msds :	MSDS_Antibody.pdf
Other_name :	KIF20A; MKLP2; RAB6KIFL; Kinesin-like protein KIF20A; GG10_2; Mitotic kinesin-like protein 2; MKlp2; Rab6-interacting kinesin-like protein; Rabkinesin-6
Molecular Weight :	100KD

Product Images



Western Blot analysis of 293 cells using Phospho-KIF20A (S528) Polyclonal Antibody