

LEF-1 (phospho Ser42) Polyclonal Antibody

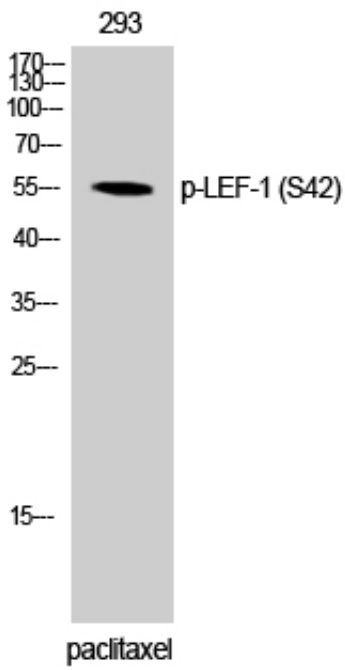
Catalog_no :	AP0374
Applications :	WB,IF,ELISA
Reactivity :	Human,Mouse,Rat
Category :	抗原抗体
Size :	100µg/50µg/20µg
Gene_name :	LEF1
Protein_name :	Lymphoid enhancer-binding factor 1
Humangene_id :	51176
Humanswissprot_no :	Q9UJU2
Mousegene_id :	16842
Mouseswissprot_no :	P27782
Ratgene_id :	161452
Ratswissprot_no :	Q9QXN1
Immunogen :	The antiserum was produced against synthesized peptide derived from human LEF-1 around the phosphorylation site of Ser42. AA range:8-57
Specificity :	Phospho-LEF-1 (S42) Polyclonal Antibody detects endogenous levels of LEF-1 protein only when phosphorylated at S42.
Formulation :	Liquid in PBS containing 50% glycerol, 0.5% BSA and 0.02% sodium azide.
Source :	Rabbit
Dilution :	Western Blot: 1/500 - 1/2000. ELISA: 1/5000. Not yet tested in other applications.
Purification :	The antibody was affinity-purified from rabbit antiserum by affinity-chromatography using epitope-specific immunogen.
Concentration :	1 mg/ml
Storage_stability :	-20°C/1 year
Msds :	MSDS_Antibody.pdf



Other_name : LEF1; Lymphoid enhancer-binding factor 1; LEF-1; T cell-specific transcription factor 1-alpha; TCF1-alpha

Molecular Weight : 55KD

Product Images



Western Blot analysis of 293 cells using Phospho-LEF-1 (S42) Polyclonal Antibody