

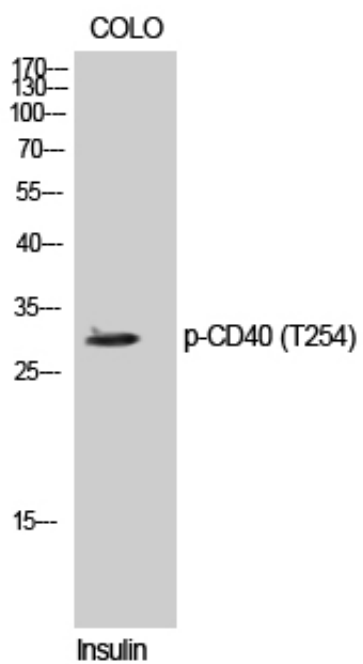
CD40 (phospho Thr254) Polyclonal Antibody

Catalog_no :	AP0379
Applications :	WB,ELISA
Reactivity :	Human,Mouse
Category :	抗原抗体
Size :	100µg/50µg/20µg
Gene_name :	CD40
Protein_name :	Tumor necrosis factor receptor superfamily member 5
Humangene_id :	958
Humanswissprot_no :	P25942
Mousegene_id :	21939
Mouseswissprot_no :	P27512
Immunogen :	The antiserum was produced against synthesized peptide derived from human TNFRSF5 around the phosphorylation site of Thr254. AA range:220-269
Specificity :	Phospho-CD40 (T254) Polyclonal Antibody detects endogenous levels of CD40 protein only when phosphorylated at T254.
Formulation :	Liquid in PBS containing 50% glycerol, 0.5% BSA and 0.02% sodium azide.
Source :	Rabbit
Dilution :	Western Blot: 1/500 - 1/2000. ELISA: 1/5000. Not yet tested in other applications.
Purification :	The antibody was affinity-purified from rabbit antiserum by affinity-chromatography using epitope-specific immunogen.
Concentration :	1 mg/ml
Storage_stability :	-20°C/1 year
Msds :	MSDS_Antibody.pdf
Other_name :	CD40; TNFRSF5; Tumor necrosis factor receptor superfamily member 5; B-cell surface antigen CD40; Bp50; CD40L receptor; CDw40; CD antigen CD40
Molecular	30KD



Weight :

Product Images



Western Blot analysis of COLO cells using Phospho-CD40 (T254) Polyclonal Antibody diluted at 1 : 500