

## Cdk5 (phospho Tyr15) Polyclonal Antibody

|                   |  |
|-------------------|--|
| Catalog_no :      | AP0380   |
| Applications :    | WB,IHC-p,ELISA   |
| Reactivity :      | Human,Mouse,Rat,Monkey   |
| Category :        | 抗原抗体   |
| Size :            | 100µg/50µg/20µg  |
| Gene_name :       | CDK5   |
| Protein_name :    | Cyclin-dependent kinase 5  |
| Humangene_id      | <a href="#">1020</a>   |
| :                 |  |
| Humanswissprot    | <a href="#">Q00535</a>   |
| _no :             |  |
| Mousegene_id :    | <a href="#">12568</a>  |
| Mouseswissprot    | <a href="#">P49615</a>   |
| _no :             |  |
| Ratgene_id :      | <a href="#">140908</a>   |
| Ratswissprot_no   | <a href="#">Q03114</a>   |
| :                 |  |
| Immunogen :       | The antiserum was produced against synthesized peptide derived from human CDK5 around the phosphorylation site of Tyr15. AA range:1-50 |
| Specificity :     | Phospho-Cdk5 (Y15) Polyclonal Antibody detects endogenous levels of Cdk5 protein only when phosphorylated at Y15.                      |
| Formulation :     | Liquid in PBS containing 50% glycerol, 0.5% BSA and 0.02% sodium azide.  |
| Source :          | Rabbit   |
| Dilution :        | Western Blot: 1/500 - 1/2000. Immunohistochemistry: 1/100 - 1/300. ELISA: 1/5000. Not yet tested in other applications.                |
| Purification :    | The antibody was affinity-purified from rabbit antiserum by affinity-chromatography using epitope-specific immunogen.                  |
| Concentration :   | 1 mg/ml  |
| Storage_stability | -20°C/1 year   |
| :                 |  |

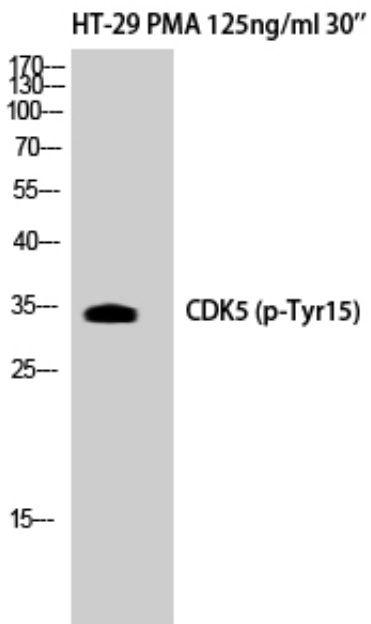


MsdS : [MSDS\\_Antibody.pdf](#)

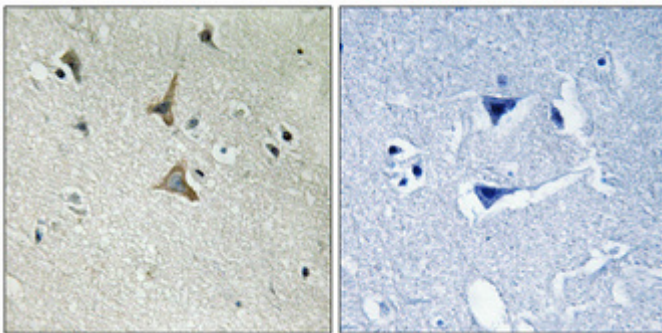
Other\_name : CDK5; CDKN5; Cyclin-dependent kinase 5; Cell division protein kinase 5; Serine/threonine-protein kinase PSSALRE; Tau protein kinase II catalytic subunit; TPKII catalytic subunit

Molecular Weight : 33KD

## Product Images



Western Blot analysis of HT29+PMA cells using Phospho-Cdk5 (Y15) Polyclonal Antibody



Immunohistochemical analysis of paraffin-embedded Human brain. Antibody was diluted at 1:100(4°, overnight). High-pressure and temperature Tris-EDTA, pH8.0 was used for antigen retrieval. Negative control (right) obtained from antibody was pre-absorbed by immunogen peptide.