

mTOR (phospho Thr2446) Polyclonal Antibody

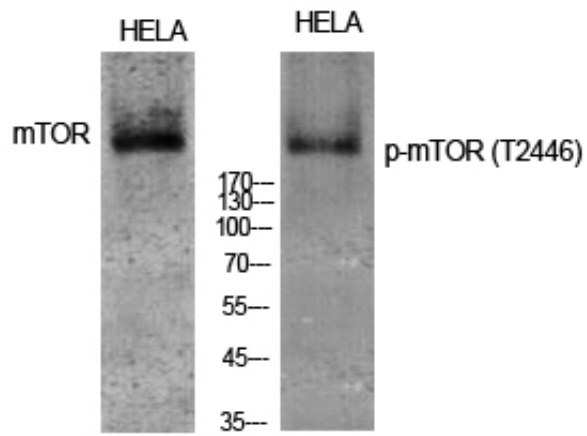
Catalog_no :	AP0384
Applications :	WB,ELISA
Reactivity :	Human,Mouse,Rat
Category :	抗原抗体
Size :	100µg/50µg/20µg
Gene_name :	MTOR
Protein_name :	Serine/threonine-protein kinase mTOR
Humangene_id :	2475
Humanswissprot_no :	P42345
Mousegene_id :	56717
Mouseswissprot_no :	Q9JLN9
Ratgene_id :	56718
Ratswissprot_no :	P42346
Immunogen :	The antiserum was produced against synthesized peptide derived from human mTOR around the phosphorylation site of Thr2446. AA range:2412-2461
Specificity :	Phospho-mTOR (T2446) Polyclonal Antibody detects endogenous levels of mTOR protein only when phosphorylated at T2446.
Formulation :	Liquid in PBS containing 50% glycerol, 0.5% BSA and 0.02% sodium azide.
Source :	Rabbit
Dilution :	Western Blot: 1/500 - 1/2000. ELISA: 1/10000. Not yet tested in other applications.
Purification :	The antibody was affinity-purified from rabbit antiserum by affinity-chromatography using epitope-specific immunogen.
Concentration :	1 mg/ml
Storage_stability :	-20°C/1 year
Msds :	MSDS_Antibody.pdf



Other_name : MTOR; FRAP; FRAP1; FRAP2; RAFT1; RAPT1; Serine/threonine-protein kinase mTOR; FK506-binding protein 12-rapamycin complex-associated protein 1; FKBP12-rapamycin complex-associated protein; Mammalian target of rapamycin; mTOR; Mechanistic tar

Molecular Weight : 220KD

Product Images



Western Blot analysis of various cells using Phospho-mTOR (T2446) Polyclonal Antibody diluted at 1 : 1000