

## B23 (phospho Thr234) Polyclonal Antibody

Catalog_no :	AP0386
Applications :	WB,IHC-p,ELISA
Reactivity :	Human,Mouse,Rat
Category :	抗原抗体
Size :	100µg/50µg/20µg
Gene_name :	NPM1
Protein_name :	Nucleophosmin
Humangene_id	<a href="#">4869</a>
:	
Humanswissprot	<a href="#">P06748</a>
_no :	
Mousegene_id :	<a href="#">18148</a>
Mouseswissprot	<a href="#">Q61937</a>
_no :	
Ratgene_id :	<a href="#">25498</a>
Ratswissprot_no	<a href="#">P13084</a>
:	
Immunogen :	The antiserum was produced against synthesized peptide derived from human NPM around the phosphorylation site of Thr234. AA range:201-250
Specificity :	Phospho-B23 (T234) Polyclonal Antibody detects endogenous levels of B23 protein only when phosphorylated at T234.
Formulation :	Liquid in PBS containing 50% glycerol, 0.5% BSA and 0.02% sodium azide.
Source :	Rabbit
Dilution :	Western Blot: 1/500 - 1/2000. Immunohistochemistry: 1/100 - 1/300. ELISA: 1/10000. Not yet tested in other applications.
Purification :	The antibody was affinity-purified from rabbit antiserum by affinity-chromatography using epitope-specific immunogen.
Concentration :	1 mg/ml
Storage_stability	-20°C/1 year
:	

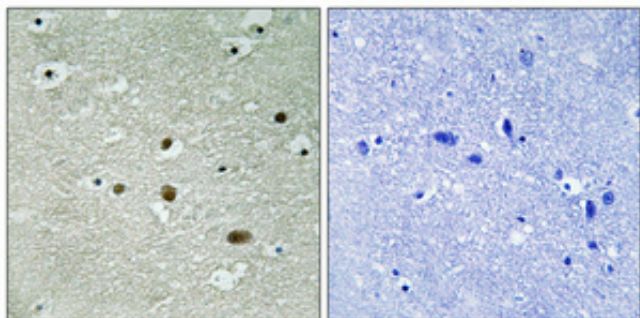


MsdS : MSDS\_Antibody.pdf

Other\_name : NPM1; NPM; Nucleophosmin; NPM; Nucleolar phosphoprotein B23; Nucleolar protein NO38; Numatrin

Molecular Weight : 38KD

## Product Images



Immunohistochemical analysis of paraffin-embedded Human brain. Antibody was diluted at 1:100(4°,overnight). High-pressure and temperature Tris-EDTA,pH8.0 was used for antigen retrieval. Negative contrl (right) obtaned from antibody was pre-absorbed by immunogen peptide.