

Pdc4-4 (phospho Ser67) Polyclonal Antibody

Catalog_no :	AP0387
Applications :	WB,IHC-p,ELISA
Reactivity :	Human,Mouse,Rat,Monkey
Category :	抗原抗体
Size :	100µg/50µg/20µg
Gene_name :	PDCD4
Protein_name :	Programmed cell death protein 4
Humangene_id :	27250
Humanswissprot_no :	Q53EL6
Mousegene_id :	18569
Mouseswissprot_no :	Q61823
Ratgene_id :	64031
Ratswissprot_no :	Q9JID1
Immunogen :	The antiserum was produced against synthesized peptide derived from human PDCD4 around the phosphorylation site of Ser67. AA range:33-82
Specificity :	Phospho-Pdc4-4 (S67) Polyclonal Antibody detects endogenous levels of Pdc4-4 protein only when phosphorylated at S67.
Formulation :	Liquid in PBS containing 50% glycerol, 0.5% BSA and 0.02% sodium azide.
Source :	Rabbit
Dilution :	Western Blot: 1/500 - 1/2000. Immunohistochemistry: 1/100 - 1/300. ELISA: 1/10000. Not yet tested in other applications.
Purification :	The antibody was affinity-purified from rabbit antiserum by affinity-chromatography using epitope-specific immunogen.
Concentration :	1 mg/ml
Storage_stability :	-20°C/1 year

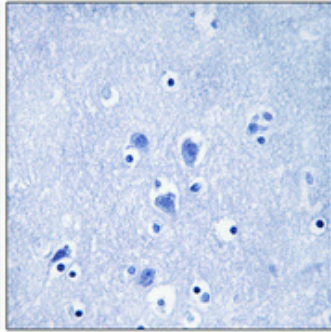
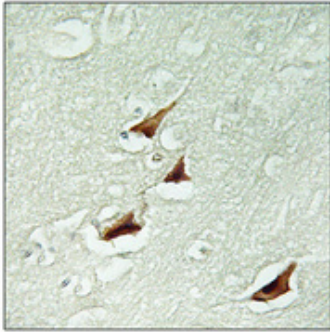


MsdS : MSDS_Antibody.pdf

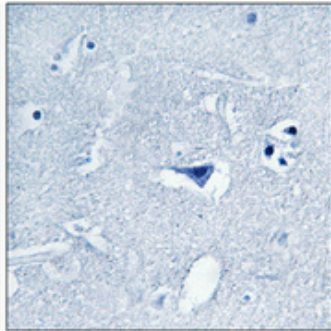
Other_name : PDCD4; H731; Programmed cell death protein 4; Neoplastic transformation inhibitor protein; Nuclear antigen H731-like; Protein 197/15a

Molecular Weight : 56KD

Product Images



Immunohistochemical analysis of paraffin-embedded Human brain. Antibody was diluted at 1:100(4°,overnight). High-pressure and temperature Tris-EDTA,pH8.0 was used for antigen retrieval. Negative contrl (right) obtaned from antibody was pre-absorbed by immunogen peptide.



Immunohistochemical analysis of paraffin-embedded Human brain. Antibody was diluted at 1:100(4°,overnight). High-pressure and temperature Tris-EDTA,pH8.0 was used for antigen retrieval. Negative contrl (right) obtaned from antibody was pre-absorbed by immunogen peptide.