

## Wee1 (phospho Ser642) Polyclonal Antibody

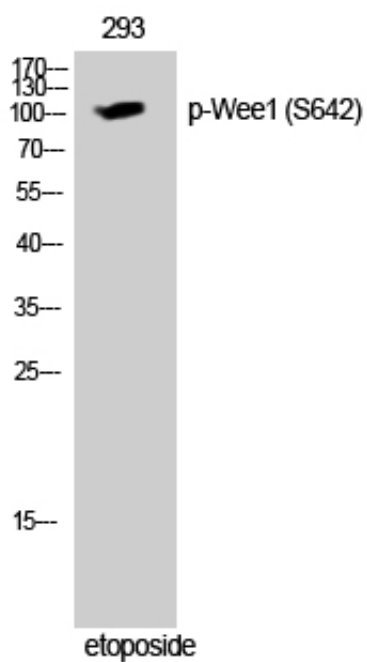
Catalog_no :	AP0390
Applications :	WB,ELISA
Reactivity :	Human,Mouse,Rat
Category :	抗原抗体
Size :	100µg/50µg/20µg
Gene_name :	WEE1
Protein_name :	Wee1-like protein kinase
Humangene_id :	<a href="#">7465</a>
Humanswissprot_no :	<a href="#">P30291</a>
Mousegene_id :	<a href="#">22390</a>
Mouseswissprot_no :	<a href="#">P47810</a>
Ratgene_id :	<a href="#">308937</a>
Ratswissprot_no :	<a href="#">Q63802</a>
Immunogen :	The antiserum was produced against synthesized peptide derived from human WEE1 around the phosphorylation site of Ser642. AA range:597-646
Specificity :	Phospho-Wee1 (S642) Polyclonal Antibody detects endogenous levels of Wee1 protein only when phosphorylated at S642.
Formulation :	Liquid in PBS containing 50% glycerol, 0.5% BSA and 0.02% sodium azide.
Source :	Rabbit
Dilution :	Western Blot: 1/500 - 1/2000. ELISA: 1/5000. Not yet tested in other applications.
Purification :	The antibody was affinity-purified from rabbit antiserum by affinity-chromatography using epitope-specific immunogen.
Concentration :	1 mg/ml
Storage_stability :	-20°C/1 year
Msds :	MSDS_Antibody.pdf



Other\_name : WEE1; Wee1-like protein kinase; WEE1hu; Wee1A kinase

Molecular Weight : 100KD

## Product Images



Western Blot analysis of 293 cells using Phospho-Wee1 (S642) Polyclonal Antibody cells nucleus extracted by Minute TM Cytoplasmic and Nuclear Fractionation kit (SC-003, Inventbiotech, MN, USA).